



Pettistree People

PETTISTREE
PARISH COUNCIL
NEWSLETTER



ROGUES COTTAGE BY SUE TANSLEY

Parish Council news - Councillor Sue Jones

At the AGM I was voted in as Chair, and Tom Over as Vice Chair, for another year. The council's finances are healthy, and we finally have a decent General Reserve for unexpected expenditure. This year's budget for routine spending is still tight but we have £10,500 in our CIL account. There will also be a chunk of money for community benefit projects from the developers of Loudham's solar site but not until 2028. As with CIL we will be open to suggestions for enhancing village living. In the meantime, the primary school received £500 of CIL money for goalposts, picnic benches, a sunshade and garden improvements.

Volunteers are always needed for village maintenance so please let us know if you are keen to help. The council has agreed to get a quote for replacing the oak post holding up the village sign as we think it is beyond repair. The bus shelters are also going to be checked for maintenance. One of our Footpaths Wardens, Cllr Will Harrison, has walked all the parish's paths and reported matters for county council action. The footpaths near Byng Hall have been examined to make sure they follow the correct routes; and they do. We are considering a footpath map for the village green and a comprehensive guide for the website. If you have a favourite route, and would like to wax lyrical about it, please let me know.

A request has been made for an 'Unsuitable for HGVs' sign on the Main Road junction with Rogues Lane and this was discussed at the

AGM. The signs are surprisingly expensive, but we agreed to find out whether CIL money could be used to fund one and, if so, whether we can get approval for it from SCC Highways. This is a Quiet Lane after all... We're also looking at 'Parking' signs to direct visitors to the Village Hall car park and away from occasional awkward parking around the Greyhound.

The mandatory Annual Parish Meeting was held in April. We discussed the large tracts of Pettistree farmland put forward for development during East Suffolk Council's 'call for sites'. The landowner has indicated the sites are not for sale, so we hope the attempt to join the village to Wickham Market with housing is a case of ambition o'erleaping reality. Nevertheless, we will need to keep a tight watch on the development of ESC's next Local Plan to ensure the land does not have 'opportunity' written all over it.

Attendance at the annual meeting was not overwhelming but those who did make it were offered some of the best cake I've ever tasted, thanks to our star baker Cllr Mary Chilvers.

Local Government elections are rarely exciting but the one in May caused an earthquake in the Labour Government. That said all political parties have fault lines so we shouldn't be too surprised when they cause the occasional shudder. I can't help observing though that if our representatives were, truthfully, in power to care for the country we wouldn't have so many ego battles.

...contd.

contd.....

Cllr Alexander Nicoll was not on the ballot paper for Suffolk County Council this time. He was thanked for being a real friend to Pettistree over nine years. Someone who very much did care about the job. Our new county councillor is Stephen Molyneux of the Green Party who has an arts charity background and is a district councillor for Woodbridge. Reform UK won 41 of 70 seats and turn-out in some parts of the county was high at 55per cent.

And finally... all things are temporary. And so, it is in Pettistree, where occasional annoyances eventually fade and this magazine, on its 111th issue, moves to a new home. I've enjoyed the return to my roots as a news reporter but reckon it's time to see less of a computer and more of family, garden and country. Sue Tansley has made a great start as the new editor, and I thank her and husband Darren for taking it on. My thanks too to all those who have contributed and given support over several years.

Sue Jones

Do you know where these are?



**SPECIALIST MUSCULOSKELETAL
PHYSIOTHERAPY**

MORE THAN 20 YEARS CLINICAL EXPERIENCE

ACUPUNCTURE

PILATES

SPORTS AND SOFT TISSUE MASSAGE



Is your injury stopping you doing what you love? Do you suffer with a long term condition? Don't let discomfort hold you back. Book your Physiotherapy assessment today!

Vida Haus Pettistree IP13 0HW

ruth.may.pilates@gmail.com

ruthmaypilatesphysio.co.uk

07985600176



Karen Carter of Grove Farm, asked us to share this business because of how impressed she was with their work.

Do you have a tradesperson you want to reccomend? Let us know.



**A.H PLUMBING
& HEATING**

Providing professional plumbing and heating services across Suffolk. Services include:

- Bathroom Installations
- Heating system installations
- Boiler installations and servicing

Fully insured and GasSafe

Contact Alfie on

alfiehuntplumbing@gmail.com or 07539 449 667



LILACS BY RUTH LEIGH

Church News - Maggie Hallett

Church Contacts:

Vicar: Charlotte Wallington
revcharlottew@outlook.com

Warden: Carolyn Westrope 01728 746139

During Easter week, daily benefice services were held at All Saints' Church in Wickham, in which the benefice choir participated, and they also contributed to the Easter Sunday service in Pettistree. It is one of the great pleasures of the two churches in the benefice that these talented singers can lead the worship several times a year. During the summer, they also lead the singing at the Evensong services, which are held at 6.00pm on the 4th Sundays of the month from now till September. We are so lucky to have such talented people in our villages. Mary Garner, who has led the choir since its foundation, sings with the Kirbye Consort, and we hope many locals will take the opportunity to attend their concert in the church on June 27th.

The Annual Parish meeting of Pettistree church was held on May 19th. The vicar thanked the retiring Officers, Martin Corral (Church warden) and Gerry Smith (Treasurer) for all their work during the previous years, particularly in relation to the difficulties that were experienced when claiming the Insurance money for the Church redecoration. Carolyn Westrope and Kevin Blyth were appointed Church wardens for the next year and warmly welcomed by those present. Leanne Castle has also retired from her role of PCC Secretary and Ann Calver has kindly offered to take on this important job. At present, the task of Treasurer is vacant, but this problem will be discussed by the new PCC at their first meeting.

Pettistree Parish Church Room is available for use for small groups. If anyone from the village wishes to view the room and discuss the possibility of using it, before making a reservation, please contact Maggie Hallett maggie.hallett@btinternet.com.

The PCC members would be happy to help anyone who has any query relating to the church or the Parish church room. They are: Revd Charlotte Wallington, Kevin Blyth, Carolyn Westrope, Mary Allen, Ann Calver (Secretary ex-officio), Revd Jenny Catchpole (co-opted member), Bryan Hall, Maggie Hallett, Martin Ives, Daphne Rose, Francis Wadley.



Church Car Park. Since there has been some confusion about access to the Defibrillator, please note that the 'plastic' chain across the entrance is not locked and is quick and easy to unclick and open. This subject will be on the agenda of the first meeting of the new PCC, and we will continue to try to help resolve the car parking problem.



Village Hall Update - Jim Jarvie

Having secured the £50,000 from Mike Watt's legacy, we are now in the process of updating the hall. A tree surgeon has applied for planning permission to remove a potentially hazardous large branch hanging over the entrance of the car park and the flat roof. Plans for the new kitchen and costings have been acquired and agreed by the Village Hall Committee. A sound proofing surveyor has been approached to scope what is required to improve the acoustics in the hall (one of the most common complaints).

We are looking to limit the effect on the hall users, and we are hoping to complete the work during the summer period when most of groups take a break. We still hope to host the coffee mornings throughout this period but if this proves impractical, we will advise the community through WhatsApp or the village email.

Hopefully, we will have a positive update for the next edition of Pettistree People.

Bellringers - Mary Garner

Bellringers contact:

Mary Garner 01728 746097



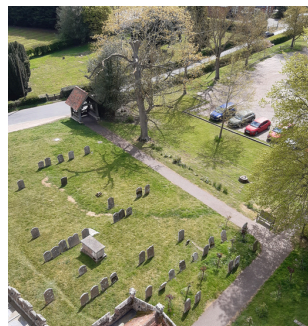
Saturday April 25th dawned sunny and warm and about a dozen Pettistree Ringers and friends set off to the deepest south; North Essex. One of our ringers, Gavin, had organised a lovely ringing tour, including lunch in his beautiful garden in Mistley.

Our first tower was at Ardleigh, a tower recently augmented from eight bells to ten. Despite being a basically a bunch of six-bell ringers we made a very creditable sound with rounds and call changes on the ten, organised and encouraged by our ringing master Mike. Next we went to Great Bromley, a stately and heavy six.



The way to the ringing chamber was a challenge in itself last part being a walk across a beam to the doorway. The rewards were great though. The ringing chamber itself

house part of the previous 14th century oak bell frame, a wonderful piece of massive woodwork. There was time to ascend firstly to the bell chamber above where the massive



woodwork. There was time to ascend firstly to the bell chamber above where the massive steel and cast iron frame, of unusual design, was made and installed by Alfred Bowell, an Ipswich Bellhanger, around the turn of the 20th century. Climbing to the top of the tower we were rewarded with fantastic views of the surrounding countryside and indeed the graveyard below.



After lunch we rang at Tendring, an interesting ring of six bells which were housed in a tower attached to the church but build on later so the bells were moved from their original place. It had a pretty bleached wooden porch to welcome people in.

At our final tower, Thorpe-le-Soken, the bells were housed in a massive brick tower with rest of the church was largely flint. It really was a wonderful day out.



The month of May is competition time for the Suffolk Guild of Ringers.

There are both District Striking and Guild Competitions. On Saturday May 2nd Wickham Market hosted the SE District competitions, one for methods and another for rounds and call changes. We took part in the method competition and came second. The Guild Striking Competitions were held on May 16th with those on six bells held at Wickham Skeith (a village south west of Eye).

The event was open to almost all ringing towers in Suffolk. The Pettistree band was thrilled to be placed first in the method competition. The band was awarded the Mitson Shield, which has been competed for annually since it was given in 1963 (covid years excepted of course).



Kirbye Voices are returning to Pettistree

Pettistree Church Saturday 27th June 7.30pm

I have been a member of this choir for several decades now, and we first sang in Pettistree Church on the eve of the rededication of the bells, December 13th 1986. Since then, the choir membership and leadership has changed not least our name, then Kirbye Consort now Kirbye Voices. It is a chamber choir from Bury St Edmunds which sings a wide variety of music from the Renaissance to the present time. Most concerts include a slot or two for instrumental music and this will be no exception.

This is a **free concert** with refreshments, lasting about an hour. Donations made will be shared between the Church and the Choir. It would be wonderful to fill the church.

Please come!

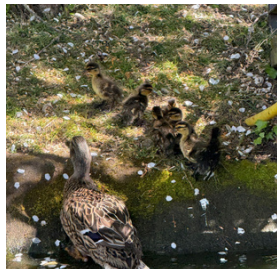
For more information, see the separate advert or contact **Mary Garner on 07791 585127**

Duck - tastic

Photos of our travelling ducks who check out various garden ponds before the big day. This year Steve Wassell had the pleasure of the hatchlings: all thirteen!



They went for a dip in the Wassells' garden rill but had to be helped out with a tray!



DUCKS PHOTOS BY LESLEY DAWSON

Useful contacts

Fallen trees: Landowner in the first instance otherwise and in emergencies: 0345 606 6171

Highways and recycling: 0345 606 6067

Highway flooding: Suffolk County Council (SCC) 0345 606 6171 or 0300 1235000

Power cuts: 105 0r 999

Water leaks: Anglian Water 24/7: 0345 145 145

East Suffolk Council
Emergency out of hours: 0800 440 2516

Waste collection: 0333 016 2000

Police: Emergency 999 or non-emergency 101
Online via the website - www.suffolk.police.uk
Email - cpt.ipswicheast@suffolk.police



Councillor Will Harrison to thank for the restoration of our bench on the village green

KIRBYE VOICES



Summer Concert

Kirbye Voices and friends

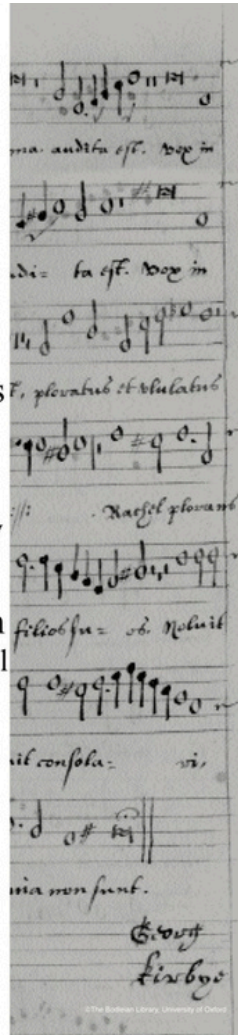
To include music
by Finzi, Satie, Delius
Britten, Holst and McCartney

Saturday 27 June 7.30pm
Church of St Peter and St Paul
Walnuts Lane
Pettistree
IP13 0HR

All welcome

Retiring collection split between
the church and Kirbye Voices

www.kirbyvoices.org.uk



Detective work needed!

Two mysteries: a spade that has been lying around in the ditch between The Laurels and Garden House for some time and tissues being left on the path near Strawtop over some weeks.



Village Hall St George's Day - Pauline and Jim Jarvie



For several years the Village Hall has been the location for a Burn's Night event, so we thought it was about time the community celebrated St George's Day. As April 23rd fell on a Thursday, we chose the following Sunday to celebrate the day.

What is more English than bangers and mash? Tom Over kindly donated the potatoes for the mash and by popular demand we acquired some Revetts' sausages (cooked on the BBQ) for the bangers.

We of course had a veggie option. Cath and Dave Caudwell drew the short straw and peeled, cooked and mashed the potatoes.

Thankfully, falling in late April we did not have to worry about snow and frost, so we were able to use both the outside and inside of the hall. Both areas were decked out with St George's, Union Jacks and Suffolk flags provided by Clare and Adam Signy.



There was an eclectic mixture of sound throughout the afternoon from table tennis, table football, Elgar's Land of Hope and Glory but more importantly, our community chatting.

Following the very informative and valuable demonstrations in the hall from our First Responders, we agreed any profit would go towards their worthy cause.

Thanks to the generosity of our community, we were able to donate £170 to them.

Thanks to all who helped on the day and to those came along.



Another perfect storm – James Hayward

Each time I sit down to write one of these updates, I start by re-reading the last one to help me to avoid repeating myself. This time it gave me a good laugh.

At the end of February, I was complaining that it hadn't stopped raining since the start of the year. Fast forward to the first week of May, and we'd had no rain at all since mid-March. Suffolk's grand total of 1mm of rainfall in April made the national news. How anyone is supposed to make a living growing food between deluge and drought is beyond me. I've been tearing my hair out! Then, we finally had a decent drop of rain. Now we need steady rainfall at least once a week through to July. Otherwise, we risk a repeat of 2025, when crop yields were down by 40%. Meanwhile, I'm writing this on my holiday in Kenya where the rainy season isn't supposed to have started yet... and it's absolutely hammering down.

There are more reasons to worry about the weather this year. Thanks to Mr Trump and Iran diesel costs have doubled and fertiliser prices have followed just as they did at the start of the Ukraine war. We could end up spending twice as much to produce half as much, which would be disastrous.

The difference this time is that while input costs have surged, crop prices haven't followed to the same extent. During the Ukraine crisis rising costs were offset, in part, by higher wheat and oilseed prices because Ukraine is a major food producer. Iran and the Gulf states are not, so there's been relatively little upward pressure on prices. Margins, already thin, have become razor-thin.

Many farmers will have sold crops at a loss just to maintain cash flow to finance spring planting. Others have reduced planting areas or applied less fertiliser. Similar reductions are being made in Australia and the American Midwest. It all points to a likely global food shortfall in nine months' time. It might not be a bad time to start stocking the cupboard!...

Rightly or wrongly, we've decided to stick with our original planting and fertiliser programme

at R Hayward & Son. If the rain comes and prices lift, it could prove the right call. So, I'm keeping my fingers (and toes) firmly crossed.

In mid-March we drilled sugar beet and spring wheat, followed by maize in early May. Timing is everything. Sugar beet must be planted once the worst of the cold has passed otherwise plants 'bolt' and produce seed instead of the sugar-filled root we're after. Not only does this hit yield, but each bolter produces hundreds of thousands of seeds, leading to persistent 'weed beet' problems for years. Maize, too, is sensitive; plant it too early and a frost can wipe it out.

In between drilling, we've been racing to get fertiliser onto the crops, and the recent rain has helped it get to work. The farm is already looking greener, which is a huge relief. We'll be taking another step into wine production by planting more vines in mid-May at our burgeoning vineyard off Stump Street. As UK Springs and Summers becoming increasingly dry, it's another risk that I hope may yet pay off.

For now, though—it's back to rain-dancing.



VILLAGE HALL FOOTPATH -SUE TANSLEY

What goes on in the village hall?

- **Mondays** - Art Class 10am to 12 noon with Robert
- **Tuesdays** - Willow Weaving 10am to 1pm Fortnightly with Jo & Upholstery 7pm to 9pm with Stella
- **Wednesdays** - Coffee Mornings 10.30am to 12 noon. 1st Wednesday of the month. Once a month table tennis.
- **Thursdays** - Art Class 10am to 1pm with Sue Tansley

Contact **Pauline Jarvie** if you want to book the Hall

Community Village Litterpick 12/04/2026 - Sue Tansley



Bases were set up in the village hall, manned by Ray Whitehand and at the top of the slip road.

We had all ages from months to multiple decades.



Quite frankly it drives me nuts, I'm sure it does you too! On Sunday April 12th all ages of volunteers headed out, fluorescent clad, to clear our parish of litter.

The Monster (other energy drinks are available) cans, beer cans, the endless little bits of plastic, the glass bottles of white wine and prosecco (classy litter bugs in our parish it seems) all were picked up and safely bagged for collection.

Collection points were arranged with East Suffolk Council (who provided half of the pickers, hoops and bags) in Loudham, by the Village green and on main road. Wickham Market loaned us the other half of the hoops and pickers. Everyone looked resplendent in fluorescent.

All our volunteers were relieved to see gorgeous weather and worked hard but had fun too.



Recent fly tipping, thankfully cleared by East Suffolk Council.



For next year; can we avoid this?

- We would not need a community litter pick if we all take a bit of responsibility for our surroundings every time we go for a walk in our community.
- If we can keep on top of the litter it will not build up as much.
- A month after the litter pick we've been relieved to see very little litter on our walks, and we pick up what we do see - but the main road between Wickham and Ufford is another matter.
- Join us next year? Proposed date **14/03/2027**. Can we make it more of a village event?



Grove Farm's Honesty Stall - Karen Carter



Our History

You can find our honesty stall on Grove Road opposite Grove Farm in Pettistree. It all started in 2015 when my son was 13 years old and he put together a small shelter that resembled a stall and started to sell our free-range eggs. In 2020 the stall grew and we built a more robust structure that you see today. Since then, we have increased what we grow and we source from local business to sell a variety of goods. Fortunately, we now see a steady stream of customers supporting our little stall.

What's Happening Now?

On the farm we have various orchards planted to support wildlife and it also supplies the stall with fresh fruit including plums and apples. This keeps me incredibly busy in the summer months making jams and chutneys. Many of the recipes I use are from my mum's cook book.



We have a very large greenhouse on the farm that we inherited from my father-in-law along with his green thumb. My daughter Lucy and myself spend many hours growing and producing a variety of vegetables throughout the whole year in bulk to sell as produce. These include staple varieties such as tomatoes, cucumbers, leeks, lettuces, cauliflowers, spring onions, beans, squash's, broccoli and many more. The population of our free-range chickens has also grown as demand has increased.

Our ethos is to support our local community of farmers and small businesses and to know where your food has come from! We sell apple and pear juice from Red House Farm in Charsfield, which is a long-established fruit farm and our potatoes and onions are all sourced locally.

Our Exciting Future Ahead

We are upscaling, renovating an old railway carriage in the hope that it will be up and running for the autumn/winter 2026. This will give us the opportunity to sell a larger variety of local goods as we will be installing a fridge and freezer.

We plan to sell venison that has been harvested from the farm. We have been eating venison

as a family for many years as it is a very healthy lean meat and we think it will be a great asset to the stall. Our produce range is going to include cheeses, bakery items, juices, milk and a larger variety of local condiments and dry goods. Lucy is growing an abundance of flowers this year and hopes to sell bouquet arrangements on the stall this summer. We will also continue to sell and produce our firm favourites, including during the spring many plants and seedlings, and also Christmas trees, wreaths, and seasonal hampers during the seasonal period.

We are looking for suppliers to help us sell local produce. If you think you can help us please contact us on carterfarms2010@gmail.com

If you want to follow our progress, you can on [@grovefarmstall](https://www.instagram.com/grovefarmstall)

We would like to say a big thank you to everyone that continues to help support our little stall!



The Cafe (with four names) - Sue Tansley



Sophie Calver, chef from “The Box” cafe in the former Three Tuns pub, sat down with me. I've eaten at the cafe several times since Sophie joined; I remember her food from Otley Hall. Never-ending soups to amazing prawn dishes and vibrant salads; it is all delicious.

There is some confusion about the Tuns; is it a yoga studio, treatment rooms, self-catering accommodation, a bakery, is there a cafe? *The answer is that it is all of these and more.*

What has brought you to Pettistree?

After culinary school Sophie travelled, ending up in cooking in NYC, the Southern states and Massachusetts. Then in Suffolk for Ruth Watson in Orford and then a few years in London. Motherhood brought her back to Suffolk, working at Martha's Barn at Otley Hall. When that closed Harvey came calling. Harvey & Co bread is for sale in the cafe, baked over in Rendlesham. Harvey reached out to Sophie & convinced her to join in this new venture.

What is unique about your food?

The menu is meat-free, but there's plenty of fish and seafood. Most dishes are vegetarian, vegan and gluten-free friendly. She prepares them fresh to order so its easy to adapt for any dietary needs. Vegetables are at the core of her cooking, “I think people get into a rut with the idea of meat, a starch and two veg”. What Sophie offers is much more. Meat eaters have said to her “if you were cooking for me every day, I wouldn't need to eat meat”. Not that Sophie is opposed to cooking meat, as long as it is ethically sourced.

Where do you source your food from?

Sophie and her mum have a one-acre smallholding where they grow organic veg for the cafe but they also source locally.

What has been selling out this week?

“Pad Thai satay noodles with Tiger prawns. It sold out yesterday, it's a real winner” and “roasted butternut squash and butterbean chilli with guacamole and nachos has been really popular” plus “risotto gets requested, alot”.

What salad should we try this summer?

“Slow roasted carrots with spices, on a creamy, smooth, confit garlic and butterbean puree with lemon and tahini served with raw pickled beetroot, grilled halloumi and a roasted pistachio nut dipper called Dukka”. WOW!

Sophie then introduces me to Abby Hall, baker of cakes and sweet things. They've been working together for years, and Abby's cakes are incredible! She suggests you try the carrot cake, or Persian love cake, but I suggest you try the rhubarb cake! Even a fruit scone has an Abby twist; but how she flavours those raisins is still a trade secret!

Did you know they do Breakfast?

Homemade granola, Turkish eggs, Mature cheddar cheese scone with chilli jam or just a delicious coffee.

When are you open?

9.30am to 11.30 for breakfast.

Sophie is making fresh lunches from 12 noon to 2 pm Tuesdays to Fridays.

Can we eat your food when you are not here?

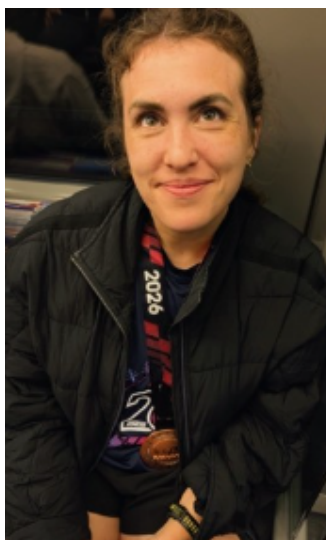
Sophie balances her cheffing duties at the cafe with motherhood and private chef jobs. She always ensures there are salads and frittatas, sometimes a soup, available on Mondays and Saturdays (as well as toasted sandwiches). Sophie says they are in discussions about how to address the multiple identities, but this does not detract from what a jewel this place is.

Come and visit before it's always fully booked, meet the lovely Kate who will serve you and take your order. She is a ray of sunshine and makes everyone feel immensely welcome. If you haven't been yet, go to this amazing cafe we can walk to (but there is a large car park if you need to drive).

You can follow Sophie's kitchen adventures on Instagram **@thebox_kitchen**. You can call Kate to book a table on **07342986964**



Marathon Success - Meg Lucas



A thank you to the people of Pettistree for the kind donations fundraising.

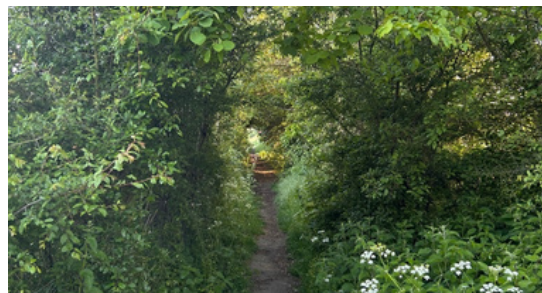
Your kind donations towards my TCS London Marathon 2026 helped me raise £5,416 for Great Ormond Street Hospital Charity.

Team GOSH raised an incredible collective total of £1.03 million. The funds support a new children's cancer centre, specialist research, equipment, family accommodation and services (like play therapy) that aren't covered by the NHS.

Our then 1-year-old daughter had open heart surgery at Great Ormond Street in 2023. We were fortunate to have a brief stay but we saw first-hand the huge difference GOSH Hospital Charity makes to children and their caregivers during long or complex hospital stays.

It was a warm and busy course on Sunday and I finished a bit slower than my goal time. I might have to have another go at some point - when my feet have recovered!

Footpaths - Sue Tansley



GREEN FARM FOOTPATH - SUE TANSLEY

Footpaths are an interesting topic, especially for landowners and ramblers who can often butt heads. Many people think they know the rules; but often get it wrong.

The public rights of way team at the council are very easy to talk to, should you have any queries.

Here's a few laws of the King's Highway (as Ray calls it), Public Rights of Way, for the rest of us:

1. Dogs should be kept under control. If this means a lead because your dog is nuts then use a lead but if you have an impeccable hound, then under control is fine.
2. It's against the law to block or move a footpath from the official definitive map. The definitive map can easily be downloaded from the Suffolk C Council's website.
3. Don't picnic or stop on the footpath. You have a right to traverse it, not sit on it & make camp. Definitely no camping!
4. Sadly no horses (or cars, motorbikes or bicycles). I find the lack of bridleways forcing horses onto the road, upsetting, but it is the law. Bicycles, you do not have right of way either (and you are silent ninjas, so please speak up or use a bell). Legally you should get off your bike or horse and walk, sorry.
5. Landowners have a duty, in law, to maintain footpaths on their land. Minimum width 1.5m at edges and 1m across fields. Overgrown flora should be kept trimmed, churning it up with farm vehicles or cropping on a footpath must be made good.

Watching Wildlife - Darren Tansley

Nature Recovery begins in the Garden

Household gardens in the UK cover an area of land equal to the whole of our home county of Suffolk. That means collectively our actions can have a big impact for nature recovery. Some actions are more obvious than others and some require a change in the way we regard the value of green space, but most are very simple and can also save us time and be better for our wallets. Here are 3 tips for a wildlife friendly garden that I do which have attracted species as wide ranging as hedgehogs, fieldfares, Pipistrelle bats and lesser stag beetles.

Left to Right: Transforming a back garden to create summer habitat for wildlife



1 Let part of your garden go wild (see above)

Most of us don't need the whole lawn for our activities so select at least 10-30% that can be left (we leave 60% unmown from May to October). It will cut your mowing costs and take less time which you can then spend watching the birds and butterflies using their new habitat.

2 Put up a bird box and leave natural nests undisturbed

Try out different sorts as different birds have different nesting needs. We regularly get blue tits and great tits in traditional boxes but we also have a robin nesting in our chimney at the moment! We won't be using that summer drinks area until the young robins have fledged.

3 Install a Bug Hotel or create a beetle pile from deadwood

Insects are an important part of our biodiversity but have declined catastrophically due to widespread use of pesticides. Without insects our birds and some key mammals such as hedgehogs and dormice are struggling to survive. If a tree dies leave the trunk standing then half bury any logs to provide perfect habitat for wood boring insects such as Stag Beetles. By re-using the wood, not burning it, you also avoid releasing carbon into the atmosphere.

IMPORTANT disease risk regarding Bird Feeders in the summer

Research has shown a worrying decline in some of our much-loved garden birds such as greenfinches (down 65% in 30 years) part-due to a **disease** called **trichomonosis**. This is highly contagious and can spread where birds gather in large numbers such as at bird feeders. So this year the **RSPB** has asked people to **stop feeding seeds and peanuts from May to October**. You can still continue to offer small amounts of mealworms, fatballs or suet over the summer. From **November to April** you can go back to filling your seed feeders as the colder weather reduces disease risk and birds will need more protein in their diet.

Suffolk Animal Rescue - Jayne Roberts



We are still in the process of securing funding for this work. It is extremely costly.

Thank you for your patience whilst all this is going on. We are aware that the dogs are noisier when the workmen are on site, but we really have to crack on with these essential repairs. The total number of kennels on site is overall being reduced from 60 to just 25, this will allow us to give each dog more space and also to ensure we don't take on more than is manageable, as we endeavour to give our animals the very best of care.

There is still lots to do at the kennels to get the facilities up to an acceptable standard. Block 2 is now complete, a nice solid structure with underfloor heating and safety doors which are essential for our pound dogs, who come to us with very little assessment. That block of 8 kennels has been reduced to 6 larger kennels which is a better space for some of our big boys.

Work on block 1 will commence at the beginning of June. There will then still be 3 more blocks needing refurbishment as they are literally falling apart (see photos).

This is our busiest season of the year, notably kitten season, so numerous pregnant mums and little ones to care for. We have also had a couple of litters of puppies recently, it is so sad that these babies find themselves in rescue.

Thank you all for your support, if you have any issues with the kennels please do get in touch.



Pettistree People - Mick and Kath Hilton

interviewed by Sue Tansley



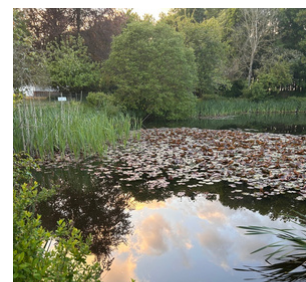
From the suburbs of London to Suffolk, what brought the Hilton's to Pettistree? Mick "BT did". Kath, originally from Islington and Mick originally from Harlesden found themselves initially moving to Suffolk with their families and their first marriages. Mick ended up in Brantham and Kath in Woodbridge. Some marital changes later, children grown up and going far afield, they fell in love with a bungalow in Pettistree called Sunnyside in 1994. Kath "It was a sea of daffodils, all around the pond, it was wonderful... we didn't know places like this existed". Mick worked for BT running the Martlesham Research lab site, until his retirement shortly after moving to Pettistree. They had fun discovering the garden and many hidden sheds and the silted up pond needed to be dredged to rediscover its original depth. Suffolk Wildlife Trust came to the rescue, helping them to dig out the silt and now the village has the magnificent pond for all to enjoy.

Kath tells me about how there was an unwritten rule in Pettistree that if you were available on a Friday night, you'd go down to the Greyhound and the villagers would take over many tables with everybody talking to all, from different

walks of life. They reminisce over people who are no longer with us; "a lot of the people that were with us were characters" says Mick. They love how the village hasn't actually changed that much but Kath explained that it was a bit of a shock when they first came because there were no pavements!

Many years ago you might have met Kath being a daytime barmaid in the pubs in Woodbridge, at the Theatre or playing bowls, you might have met Mick at BT labs or out walking with his beloved dog Jodie. In the village you would often find them washing up after a village event. Now they face an uncertain future as medical reasons may force them to have to leave their beloved Bungalow, pond and village after 32 years. But Mick says "I've had a charmed life...I've got no regrets at all...I don't feel I've missed anything". Kath is madly keen on the Theatre. She was a member of the Company of Three theatre group for many years. With her son and granddaughter following that path she'd like to be jetting off to the theatre in London and New York. Do you regret leaving London? Kath "No regrets at all, we've met some lovely people".

Then Kath reveals that her Great Grandmother originally came from Suffolk and she grew up not even knowing where Suffolk was!





The Birth of Pettistree - Ray Whitehand

Pettistree is a relatively modern parish in as much as it is a post-Domesday parish. Some early records identify it as a township. Its earliest identified reference in the 1202 pipe rolls use the spelling Peterestre.

Both Byng and Loudham predate the Domesday book of 1086. In fact, there are settlements at Sand Pit, Loudham and Stump Street, Pettistree that are said to sit on footprints with Anglo Saxon origins.

in 1253 Roger de Huntingfield was granted right to hold an annual fair at Petistre on feast of St Peter & St Paul. Medieval features on the northern bank of the Byng Brook would have resulted from the Grant of the Rite to manage a rabbit warren at same time as the fair.

In the Norwich tax list of 1254, the church of St Peter & St Paul Poterestre was valued at 4 marks. the same spelling was used in the Court rolls of 1279. References in surviving documents to other medieval localities include Bing Bridge in 1319, and Presmere pond [1390].

The 1535 Valor Ecclesiastes for Petstre gives an inventory of the goods and chattels in the Church. In the 1650s Byng Bridge straddled the Kings highway between

Presmere pond and Byng Hall. Early entries include Byng Mill 1316, and Millfield 1329.

In 1440 the same plot of land was identified as the Mill on the mount. There was a windmill on the high ground to the south of the track leading to Byng Hall

Conyfer Hill takes travellers down the incline from the Presmere pond to Bing Bridge. To its east are two fields Upper and Lower Conyfer Close which run east from Bing Bridge towards the Town House, which was a very modest building with an enormous amount of history.

Knabbs house and Knabbs fields are early references to the town house with sits further east on the north bank A tenement originally known as Seamans in 14th century, became Nabb house, then Town House the occupiers in the early 16th century were Robert & Elena Trowant. Their four children were each 'registered' as living at The Nabb house on their baptism register.

While Pettistree had become the dominant parish by the 18th century, there are existing court books for Wickham and Membris which include Byng up to 1864-1879.

Contacts

Parish Councillors

Chair, Comms & PC Delivery: Sue Jones
07725 197654

chair@pettistreeparishcouncil.gov.uk

Vice Chair & Planning: Tom Over
07767111267

Safeguarding: Mary Chilvers 01728 746123

Council IT & Footpaths: Charlie Warburg

Village Hall representative: Olivia Smith
07866652062

**GDPR Data Controller, Community spaces
& landscaping:** James Hayward
07500818121

Roads & Footpaths: Will Harrison

To contact by email:

Cllr(surname)@pettistreeparishcouncil.gov.uk

Clerk: Andrew Staples

clerk@pettistreeparishcouncil.gov.uk

Responsible Financial Officer: Simon

Ashton rfo@pettistreeparish council.gov.uk

Pettistree People Editor: Sue Jones, Sue
Tansley, Darren Tansley

Pettistree News Editor: Cath Caudwell
roguescottage@mypostoffice.co.uk

Whatsapp Group Administrators: Alice
Over and Sue Jones

Website: Meg Lucas

www.pettistreeparishcouncil.gov.uk

Village Hall Booking: Pauline Jarvie

01728 745030 paulinejarvie@yahoo.com

About Pettistree People

Pettistree people has been running since February 1996. It is funded by the Parish Council.

It has had many contributors and editors over the thirty years. Sue Jones is now stepping down as Editor; she has done a fantastic job while also being the Chair of the Parish Council.

Sue and Darren Tansley are taking over for the Autumn edition. We moved to Well Cottage, Stump Street in July 2015. There will be a new look but we'd love some feedback.

Please send us ideas on anything you'd like to see and read. Send photos and articles. Send stories, poetry and promotions of events. Suggest resources you think we should include.

We want it to reflect the village, the people in it and be a useful resource for our community.

Sue and Darren Tansley

Email:

pettistreepeople@protonmail.com

Phone/WhatsApp Sue: 07711266990



BLUEBELLS ON BYNG LANE BY SUE TANSLEY

Thank you for reading!