



# Pettistree People

*A newsletter for all the residents of Pettistree and Loudham*

Pettistree Parish  
Council ©

Issue 84  
September 2019

## Parish Council News

Jeff Hallett, Parish Council Chairman

I actually wrote my last report in May and a lot has happened in national and local politics and community activity since then. We remain in a complete muddle over Brexit and the antics of our new prime minister. Our MP Therese Coffey has suddenly become a Cabinet member and may have less time for local concerns. The campaign by EDF for approval of its plans to build two new nuclear reactors at Sizewell C ploughs on through a succession of consultation stages and now seems to be gathering even more criticism. This was shown by a mass demonstration called "Love Minsmere" to object to the nuclear development next to Minsmere bird reserve. Suffolk Coastal District Council has now become East Suffolk Council by merger with Waveney and the new Local Plan is reaching the end of its approval process. More on this below.

**The weather** has been rather eventful. Bouts of high winds have been mixed with long periods of low rainfall and a lot of lawns now look rather brown. Several people have reported poor apple crops no doubt due to poor weather and few bees when some varieties were flowering. Large trees overhanging the road from owners gardens have been causing concern but luckily no injuries. I have had to have the top branch taken out of a large lime tree and The Clockhouse has had several large branches trimmed to avoid them falling onto vehicles, walkers or cyclists near the Green. A large branch did fall from an oak in Java Lodge Lane on 18th June and blocked the lane completely. I made an urgent call to the Highways Department of Suffolk County Council and they sent a gang the same day to cut it up and clear the road. There are still some trees that need expert attention by their owners.

We have had two **meetings of the Parish Council** since the last newsletter. On 9<sup>th</sup> July we resolved to make further efforts to get problems sorted out with the Highways Department over the state of footpaths, worsening potholes, and setting up SIDs (Speed Indicator Devices). Our county councillor, Alexander Nicoll, had said he would do what he could to help. On 10<sup>th</sup> September we discussed the responses on these matters including a visit from a Rights of Way officer from SCC, a report on the sites and sizes of the potholes, and the approval of only one of our three proposed SID sites. Since then yellow lines have appeared around several potholes indicating that work will be done, and we are expecting a site visit to discuss the SID sites.

Renovations at **the Three Tuns** have been ongoing and are now nearing completion. An Open Day has been announced for 21<sup>st</sup> September by **Vida.Haus** showing their movement classes such as dance, yoga and pilates. The plant-based coffee shop will be open. The internet advertises accommodation in nine self contained luxury suites.

The separate Local Plan and the Sizewell C consultations have taken a huge amount of time for some

Cont page 2

### Inside this issue

Chairman's report cont	2
100 Club	2
Race across America	3
Deer on my driveway	3
Old Greyhound photo	4
Pettistree Suffolk Day	4
Planning applications	4
Bellringers' milestone	5
Hedge cutting	5
Therese Coffey news	5
Church News	6
Madeira history	7
Pat's Word search	7
Diary Dates	8
Contacts directory	8



of us councillors over the last few months. I have attended most meetings but Chris Cook comes a close second. At our Parish Council Meeting on Tuesday 10<sup>th</sup> September I reported on the following:-

- 3<sup>rd</sup> July Sizewell Community Forum in Leiston at which EDF reported on the Stage 3 consultation, to be followed next day by the unexpected Stage 4 release.
- 25<sup>th</sup> July EDF display at Wickham Market of the recent changes in Stage 4.
- 26<sup>th</sup> July JLAG Meeting (Suffolk CC with East Suffolk ) To form a joint response to Sizewell C plans.
- 14<sup>th</sup> August Planning Aid Meeting by the Royal Town Planning Institute to advise on the best way to write a response to Stage 4.
- 7<sup>th</sup> Sept. Joint meeting of local Parish Councils to exchange views and form a consensus for our comments.

Our final response on **Sizewell C** is now being drafted concentrating on worries about congestion of construction traffic in Wickham Market (going to the Park and Ride at Hacheston), leading to vehicles forming “rat runs” through our narrow Pettistree lanes as well as overloading of the A12 from Martlesham all the way to Yoxford. Once it is approved the building of Sizewell C will take from 10 to 12 years. We will also support concerns of neighbouring parish councils.

The final hearings of **the Local Plan** proposals are now being held by the Government’s **Planning** Inspector at East Suffolk House in Melton. I shall be addressing the Inquiry tomorrow (17<sup>th</sup> Sept) to try to forestall the plans of the District Council and Hopkins Homes to build from 125 to 150 new homes on the field that is in Pettistree Parish adjacent to the recent Hopkins Homes development of Wickham Place opening onto the B1438. We fear considerable adverse effects on the structure of our rural community, the strain on infrastructure such as drainage, health services, access to secondary schools and local traffic. It will effectively become a part of Wickham Market inside the parish of Pettistree with confusion about who is responsible for what and which community the new residents will identify with.

The above new developments are being assessed individually but there is increasing recognition that there will be serious **Cumulative Effects** on the environment, social structure and attractiveness to tourists from the combination of the following:-

- Construction and operation of Sizewell C
- Massive new residential building in many areas of Suffolk such as Adastral Park
- Possible new Ipswich Northern Bypass.
- Power cables and transformers from North Sea wind farms including the Friston development by Scottish Power
- Gas pipeline from Europe in Bacton, Norfolk.
- Further growth of Felixstowe container port.

On a more cheerful note the village Marquee has had two outings. Both were very successful and confirmed what an asset it is going to be for village events. Both were for family functions but a village team attended to erect and dismantle the tent. We are getting better at it all the time.

Jeff Hallett

100 CLUB	1st prize	2nd prize	3rd prize
May	J Ayris	Val Pizzey	Mick Hilton
Jun	Ray and Sue Lewis	Evelyn Whitfield	Mary Garner
July	Mrs Green	Chris Garner	Rita Smith
August	Mary Morris	Mrs Green	Kathy Hilton
September	Mary Hallett	Chris Cook	Mary Chilvers



## James and Tom Race Across America

As many of you will recall - especially those who kindly bought raffle tickets - my son-in-law James Harvey, a breast surgeon, and his team mate Tom attempted the RAAM (Race Across America)- the toughest cycle race in the world in June to raise money for the charity Prevent Breast Cancer. They did huge amounts of training for eighteen months and lots of research to give themselves the best possible chance and set off with a team of six supporters in two cars.



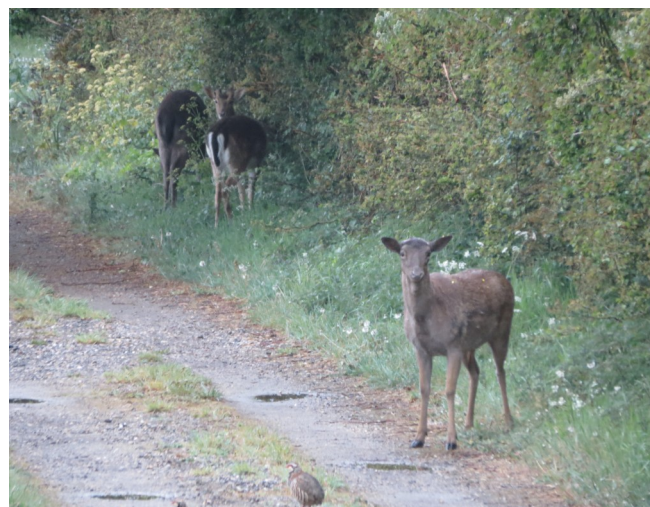
Sadly Tom had a sniffle at the beginning of the race and by day three it was diagnosed as a viral infection and he had a very high temperature and was ordered to bed for twenty four hours. One car sped ahead with him to a hotel where he slept it off while James cycled on alone, only stopping briefly when desperate for rest. Once Tom was back on the bike they pressed on and overtook the team ahead of them but were by then struggling to make the time stations. On the fifth night while Tom was riding through a thunder storm an electricity substation 10 metres from him was hit by lightning and blew up in a ball of fire. Thank goodness Tom was not injured but he was severely traumatised so after 2200 miles (of the 3081 they should have done), they decided to call it a day. But what a brilliant achievement. We are so proud of them and they raised £107,000 of the £125,000 they had hoped for - still a useful amount towards preventing breast cancer. You can still donate at James & Tom race Across America 2019 - Just Giving.

Pat Deliss

## Deer on my driveway - and a partridge

Alerted to something unusual by Edie and Lyra barking at the bedroom window I peered out to see three fallow deer grazing on the hedge alongside our driveway. It is not unusual for us to return at night to find deer on the drive but it is less usual to see them so clearly during the day. We have seen anything up to 25 at a time with a good number of entirely dark-coloured deer; a contrast to the traditional brown with white spots.

The male, which is known as a buck, not a stag, is in the middle of the three. As he turned to face me I could make out the start of his antler growth for the season; two soft stumps rising above the brow. Fallows are the only Suffolk deer to grow wide, palmate antlers. They are first covered with a blood rich 'velvet' which feeds their growth, but eventually this is rubbed off to reveal the bony plates beneath. After the breeding season the antlers are shed so no longer provide the casual observer with an easy form of identification. However the rear end of both males and females is utterly distinctive at any time of year with its dark 'upturned horseshoe' framing a tail with a dark stripe.



Of the five resident deer species to Suffolk, only two are native; red and roe deer. Muntjac, Chinese water deer and fallows were all introduced, although fallow deer have been with us for about 1000 years so could be considered naturalised.

Darren Tansley



## Hi there. Thought you may be interested in the attached photo.

As you can see it was taken outside the Greyhound. In the picture are Cyril & Veronica Dearing (known as Bob and Ron), with their son Christopher and Bob's Mother, Dorothy Dearing (my grandmother). Bob was my mother's brother.

Bob and Ron were the publicans at the Greyhound in 1966/67 when the photo was taken. They left to take over the Waldringfield Maybush which they ran for about 10 years.

I wonder if there are any residents of the village who remember them. Obviously a long time ago !!



All the best , David Ling

## Pettistree Suffolk Day



On Saturday 22 the Village Hall hosted it's first Suffolk Day. Suffolk Day has only been going for 3 years and is fixed for the weekend of the longest day. The hall and car park were decked out with Suffolk flags and bunting courtesy of Claire and Adam Signy. The weather in June can be unpredictable so two pop up gazebos were on standby. We didn't expect them to be put up to provide protection from the sun but nobody complained.

The indoor bowls mat was put out along with the table soccer. Eric Dowker supervised the bowls which attracted young and old alike. Most attendees were happy to circulate between tables to catch up and put the world to rights (the 'B' word was banned!).

As well as the 'sporting activities' a BBQ (what a surprise) was prepared by Dave, Alan and Jim. Over 40 people attended including children (it was good to see Leslie the vicar and his family) and after expenses a profit of £88 was made.

Thanks to all those who helped on the day and keep a look out for upcoming events. We are having a Treasure Hunt in September (dates to be confirmed) and a 60s Vinyl Night later in the year. **Jim Jarvie**

**PS** The 60's, and 50's and 70's, vinyl night at the Village Hall will be on Saturday 16th November at 7pm. Bring a 60's dish plus drinks, vinyl records. Period dress is optional!

## Planning applications received

DC/19/2246/FUL Low Farm, Byng Lane. New dormer windows Permitted

DC/19/3012/FUL Hungarian Hall. Change of use to holiday lets Awaiting decision

DC/19/3499/FUL Pettistree House . Extension to include swimming pool, etc. Awaiting decision



## Another milestone reached .....

The bell ringers reached another milestone on Wednesday August 7<sup>th</sup> when the 1200<sup>th</sup> Quarter Peal since the rededication in 1986 was rung. Although not exactly planned it seems very appropriate that 12 different methods or patterns were rung during this piece. A quarter peal is a continuous piece of ringing where each bell rings a minimum of 1250 times. In fact most of the quarter peals at Pettistree have between 1260 and 1320 changes or rows.

The photo shows the band who rang. Starting from the front right clockwise to the back right: Pippa Moss, treble; Mike Cowling, 2<sup>nd</sup>; Mary Garner, 3<sup>rd</sup>; Peter Harper, 4<sup>th</sup>, Kate Eagle, 5<sup>th</sup> and Mike Whitby, the conductor, rang the tenor.

Although we have a very well supported practice on a Wednesday evening, it's often difficult to meet six on a Sunday, because many of our regular practice ringers ring in their own towers on a Sunday morning. If you would like to give bell ringing a try please contact Mary Garner on 746097 or send me an email [marysgarner@tiscali.co.uk](mailto:marysgarner@tiscali.co.uk).



There is no age limit. You do not need to be a churchgoer. It's likely that you will learn to "handle a bell" in less than ten twenty minute sessions. Once you can ring the bell without help you will be a member of the team. Learning to handle can be arranged at a time to suit. Please think seriously about learning this skill. Our village bells are a valuable asset and it would be good to know that we can keep them sounding for many years to come.

Mary Garner

## Hedge cutting

I have arranged for Westrope Farms to do the hedge cutting in late October or early November. Their man comes with good reports of high standards. You can contact me on 01728 745083 if you require information.

Louis Deliss

## Therese Coffey MP, newsletter

"It has been a busy few months with a change in Prime Minister. I have been asked to continue as Environment Minister, taking on responsibility for climate change adaption and resilience, though no longer undertaking our international environment work. I was pleased to receive a promotion to Minister of State."

Her latest newsletter of 20<sup>th</sup> August is very comprehensive and is too long to include in Pettistree People. It covers the following- Energy/Environment. Health and Care, Education., Transport, Broadband, Business, Constituency and Suffolk Matters, Parliament, Ministerial and Other Meetings & Events.

Her website [www.theresecoffey.co.uk](http://www.theresecoffey.co.uk) and Facebook are regularly updated



## Pettistree Church News

**Ride & Stride** Now renamed the Ride+Stride, this National event, (which was the idea of a couple from Charsfield) formerly known as the Suffolk Historic Churches Trust Sponsored Bike Ride, was on September 14<sup>h</sup> when more than 40 cyclists visited Pettistree church. Several cyclists were riding to support Pettistree church as 50% of the sponsorship money, raised by those participating, goes directly to the church they have nominated. At the church cyclists and walkers were welcomed by volunteers who signed the sponsorship forms and offered drinks, sweets and local apples.

The Ride and Stride is the main source of income to Suffolk Historic Churches Trust and enables it to make grants to churches and chapels *of all denominations* towards repair and restoration costs. In 2018, over £137,500 was raised, with 3,000 people of all ages cycling around the churches of Suffolk – 728 of which were open and manned.

Luckily it was a beautiful day for cycling, but many of those visiting the church remarked that there were fewer sponsored participants this year. Unfortunately there was another cycling event in the county on the same day and this may have reduced the numbers taking part in the fund-raising.

### First Sunday Services

Due to the falling numbers of people attending Evensong during the darker winter months, and after consulting the congregation, the PCC decided to change to a Morning Service at the usual time of 9.30 am. This change will be reviewed at the Annual Meeting in 2020. Please let the vicar or churchwardens know your views about this change.

**FIND** Please remember that we are committed to supporting this charity, and as well as our Harvest donations of both food and money there are always two boxes at the back of the church for donations of 'in-date' non-perishable food, which will be delivered to the depot in Ipswich regularly. The charity struggled to keep up with demand during the school holidays possibly due to the loss of a free midday meal for some school-age children.

Maggie Hallett

---

## Madeira history

Many readers of Pettistree People will be aware that Jeff and I have been to Madeira many times during the past 20 years and that we were under the impression that we knew a lot about the island. We were surprised on our visit in May to come across this memorial stone in the Santa Caterina Park close to the centre of Funchal.

I decided to research on the internet and discovered more about the history of this stone:-

Apparently the people of Gibraltar (women, children, the old and the infirm) were first evacuated to French Morocco in 1940. When France fell, they returned to Gibraltar but were sent on to Madeira, Jamaica and the United Kingdom as Gibraltar was then a highly strategic fortress. It was a precarious journey as Naval Escort ships were scarce as they were needed for convoys more vital to the war effort, but most of the Gibraltarians survived and reached their destinations. The majority of the adult men remained in Gibraltar to help fight the war.



# Can you find 21 dogs in Pat's Word Search?

PLUS 64 others

P	E	K	I	N	G	E	S	E	I	K	R	O	Y	T
O	A	I	R	E	D	A	L	E	I	O	O	E	E	O
I	T	T	N	I	H	O	U	N	D	L	S	P	A	T
N	B	T	T	Z	D	E	L	D	O	O	P	U	U	W
T	H	E	M	E	F	G	E	R	D	I	A	P	U	G
E	B	N	E	I	R	H	A	A	H	R	A	P	A	R
R	O	N	W	F	E	D	D	W	E	T	S	Y	T	E
I	A	W	R	F	I	O	A	I	E	R	A	U	O	Y
D	R	O	D	A	R	B	A	L	T	I	H	R	D	H
G	Z	B	O	T	R	E	V	T	E	M	L	N	E	O
E	D	H	W	S	E	R	U	F	X	E	U	I	E	U
B	A	S	S	E	T	M	X	O	L	O	W	L	R	N
A	G	A	E	M	P	A	F	G	H	A	N	E	E	D
C	O	L	L	I	E	N	U	Q	O	G	N	B	O	S
K	S	R	E	X	O	B	U	L	L	D	O	G	C	E

- Afghan      Ada      Gent      Puppy
- Airedale    Aga      God      Rex
- Basset      Balti    Has      Rod
- Boxer       Bass     Hip      Roe
- Bulldog     Beef     Hut      Set
- Collie       Boar     Irk      Sob
- Deer/hound  Bugle    Kin      Spa
- Doberman    Dago     Kitten   Spat
- Greyhound   Dale      Lash     Stew
- Labrador    Dane     Lead     Ten
- Lhasa Apso   Dowse    Leo      Terrier
- Mutt          Draw     Lie x 2   The
- Patterdale   Edit      Met      Theme
- Pekingese   Era       Mew      Trim
- Pointer      Fat       Mule     Trio
- Poodle       Fed       Need     Tot
- Pug           Fog       Nile      Wet
- Ridgeback   Fox       Nor      Wife
- Staffie       Frozen    Owl      Wilt
- Whippet      Fur       Own      You
- Yorkie       Gay       Par      Yes

The last evacuees returned to the Rock in 1951.

In 2008, this monument was made in Gibraltar and shipped to Madeira where it was erected next to the small chapel in Funchal. The monument is a gift and symbol of ever-lasting thanks given by the people of Gibraltar to the island of Madeira and its inhabitants.

The city of Funchal and Gibraltar were twinned on 13 May 2009 by their then mayors, the Mayor of Funchal and the Mayor of Gibraltar, who had been a child evacuee from Gibraltar to Madeira.

A hour-long documentary of the evacuation of the people of Gibraltar to Madeira during the Second World War premiered in Gibraltar in April 2019 and records many of those who were evacuees, some of whom remained on Madeira after the war.



Co-incidentally a few days after writing this we are off on a cruise which includes a day in Gibraltar, so I may try to locate the statue that was commissioned to commemorate the return of the civilian evacuees.

Maggie Hallett



**DIARY DATES**

**Remembrance Day** On Monday 11<sup>th</sup> November there will be a short Service of Remembrance to include the 2 minute silence at the War Memorial in the churchyard at 10.50am

Tuesday 12th November **Parish Council Meeting** at 7 30 pm in the Parish Room

16th November **Vinyl Night** –see page 4

**Christingle Service** primarily for pre-school aged children including those attending Presmere Nursery, but open to all youngsters with their parents, grand-parents and friends. *Date to be finalised so consult the notice-boards.*

**Carol Service** Sunday 22nd December at 9.30 am in the church followed by hot drinks and mince-pies

**Christmas Bring a Plate and Share lunch** on Sunday 22nd December 12.30pm in the Village Hall

**Midnight Communion** Tuesday 24<sup>th</sup> December at 11.30 pm

**Christmas Family Communion** Wednesday 25<sup>th</sup> December at 9.30 am

*NB Check Christmas church service dates on the notice board or website*

**CONTACTS DIRECTORY**

**Parish Councillors**

Jeff Hallett, Chairman, The Laurels 01728 746210

Mary Chilvers, Coopers Cottage 746123

Chris Cook, Byng Brook House 748388

Steve Hind, Flint Cottage 746532

Terry Rowles, Low Farm 01394 460422

Mike Watts, Burways 747202

Philip Westrope, Park Farm House 746139

**Parish Clerk,** Keith Bridges 01473 241522

**County Councillor** Alexander Nicoll  
alexander.nicoll@eastssuffolk.gov.uk

**District Councillor** Carol Poulter  
carol.poulter@eastssuffolk.gov.uk

**Neighbourhood Watch**

Dave Caudwell, Rogues Cottage 747170

**Vicar** Rev Leslie Siu 561572

**Church Wardens** Brian Nobbs 746590

Kevin Blyth 748205

**Bellringers** Mary Garner 746097

**Village Hall Booking** Pauline Jarvie 745030

**The Greyhound** 746451

**Wickham Market Health Centre** 747101

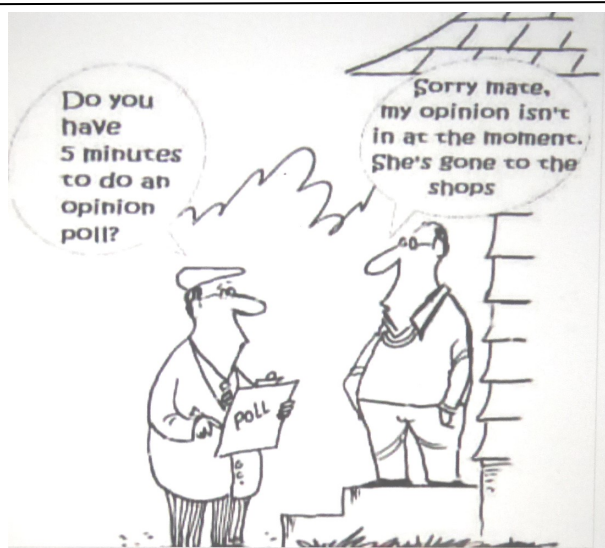
**Wickham Market Post Office** 746201

**Wickham Market Library** 747216

**Dial-a-Ride** 01473 281194

**Village website** www.pettistree.suffolk.gov.uk

**Webmaster** webmaster @pettistree Suffolk.gov.uk



**Please note, the last**

**Copy date for the December issue will be 20th November**

**Please send to ppedit@uwclub.net**

**Contact Pat Deliss 01728 745083 or Mike Watts 01728 747202**