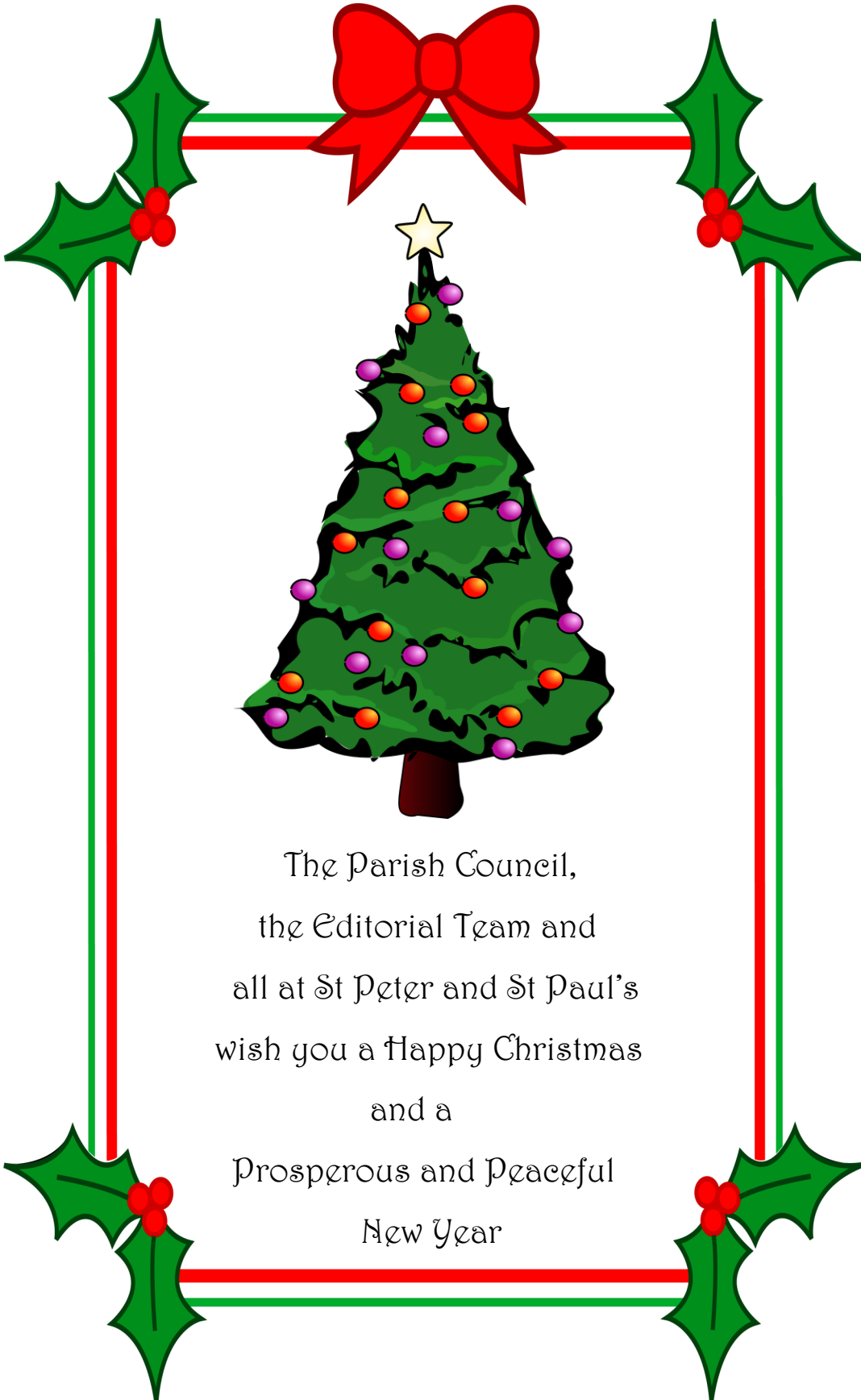


Pettistree People

A newsletter for all the residents of Pettistree and Loudham

Pettistree Parish
Council ©

Issue 67
December 2014



The Parish Council,
the Editorial Team and
all at St Peter and St Paul's
wish you a Happy Christmas
and a
Prosperous and Peaceful
New Year

Inside this Issue

<i>Parish Council report</i>	2
<i>Comings and goings</i>	2
<i>Church repairs</i>	3
<i>Church news</i>	4
<i>Runners Up</i>	4
<i>Charlie Haylock</i>	4 & 5
<i>Maggies' Cruise</i>	6 & 7
<i>Concrete Puzzle</i>	8
<i>Carols in the Barn</i>	8
<i>Word Search</i>	9
<i>Poppy Appeal</i>	9
<i>Young writers appeal</i>	9
<i>100 Club</i>	9
<i>Recycling Visit</i>	10
<i>Ringers News</i>	11
<i>Beware of Ammy!</i>	11
<i>Quiz Night</i>	11
<i>News in Brief</i>	11
<i>Hedge cutting</i>	12
<i>Diary dates</i>	12
<i>Contacts directory</i>	12



Parish Council News

As I write this we have had over two inches of rain in the last couple of weeks but the sun is shining strongly today. The leaves are falling and it is becoming important to tidy up hedges and roadside verges before the winter weather arrives. Fortunately our local farmer, Richard Hayward is prepared to cut hedges for property owners with a clear hourly rate for the service. Louis Deliss of Home Farm Barn is kindly co-ordinating the cutting list. He can be contacted on louisjdeliss@aol.com or 01728 745083 or 07885636632

We should be well prepared for when snow arrives. The grit bins are in place and registered volunteers are ready to spread salt on the most troublesome corners. Please discourage others from taking the salt for domestic use.

As announced in the last newsletter, Elaine Boardley has left the Parish Council and has also moved out of the village. The Parish Council has to be re-elected every four years and this is next due on May 7th (same day as the General Election). Until then we can co-opt a replacement parish councilor without a separate election. (An election costs over £600 and this has to be added to your council tax bill.) In May councilors have to decide if they will stand again and anyone else can apply as well. If there are more than seven candidates for the seven vacancies an election will be called.

At our Parish Council meeting on 11.11.14 I was re-elected as Chairman to fill the gap until May. Mike Watts is still Vice Chairman and Clive Mann continues as Parish Clerk with the important role of advising the Council on the various rules and regulations.

Plans to clean and restore the surface and lettering of the War Memorial are making progress. Our District Councilor, Jim Bidwell, hopes to use some of his locality fund to pay for much of the work so

we are now seeking suitable quotes from local firms.

In recent years we have held a "litter-pick" day in the early Spring but the "yield" of rubbish has been getting steadily less. This is because regular walkers have been so good at picking up litter throughout the year. For this reason we are not planning a litter-pick in the Spring unless an obvious problem builds up before then. Please continue to pick up any litter you see on your walks.

It appears that broadband service is very variable around the village and those with poor reception have significant problems. Tony Franklin is trying to get to the bottom of the reason for the variable service that may be due to old wiring or connections. Unfortunately it appears that we cannot get the new superfast broadband as the fibre-optic cable is too far away in Wickham Market.

Tony suggests that we should check our broadband speed. He recommends we should use a good broadband speed mapping tool which can be found at www.broadbandspeedchecker.co.uk This tool allows us to measure our broadband speed and record it on a map to build up a picture of the service in the village.

Pettistree People has again been successful in the SALC "Newsletter of the Year" competition. Mike Watts and Maureen Stollery attended the presentation evening on 12th November and received second prize. It is good to see the hard work of our editors and contributors rewarded in this way. All the work is voluntary but the Parish Council pays the printing costs. Please continue to send Mike a good flow of articles.

Jeff Hallett, Chairman of the Parish Council

PS. Please don't forget the photographs Ed

Comings and goings

In recent years we have welcomed quite a number of new residents to our village, which has helped to keep the village on-going and happy.

This month we welcome Mark Amoss and Judy Brown to our lovely Pettistree. We do hope they will be very happy. It was good to see Mark and Judy at our recent well attended evening with Charlie Haylock, along with other new faces.

We have also said a very sad goodbye to Steve and Elaine Boardley, and Karen Hunter.



Church repairs and redecoration update

We are delighted that the contractors started work in the middle of September, as promised. As I write this they have assured us that work is expected to be completed during the first part of December. It will be wonderful to welcome everyone into a smart re-decorated building for the Carol Service etc.

At the moment the main part of the church is swathed in orange plastic, full of scaffolding and very dusty. All the old paint on the walls has been removed chemically, the repairs and painting of the ceiling are done and the walls are being repaired and prepared for painting.

Outside work continues on the buttresses at the east end with some stonework and bricks to be replaced as well as some major grouting. The woodwork which supports the guttering on the North side of the chancel has been repaired and replaced as necessary and painted. The old guttering on the nave is about to be removed and new fitted.

Thankfully only a few additional expenditures have been incurred as problems have been uncovered.

We've been able to get a closer look at the small pieces of coloured glass in the south windows. It seems that they may have been in an earlier east window in the chancel, but more investigation is needed at the Record Office, as it is for the vault entrance revealed by the works.

Two pews were removed from the back of the church before the scaffolding was erected. Details of their construction and placement were written on them. They had been put in by Allen's of Wickham Market in 1911. They are now in store and the floor has been levelled.

The George III Coat of Arms is with the conservator in Norfolk and only this week a generous grant towards this work was received from The Leche Trust, a London charity who only award grants for the preservation of things Georgian.

Mary Garner



1. New floor; 2. Repaired & painted ceiling; 3. Scaffolding in the nave; 4 & 5 South window detail



St Peter & St Paul Pettistree

As has been reported elsewhere the majority of the interior work is expected to be completed during the first part of December. There will still be further work to be done where the rear pews have been removed and we will have to agree on the quality and colour for the new carpet, the original one is over 35 years old and needs replacing, but we should be able to celebrate Christmas in the redecorated nave, under a ceiling without worrying cracks and patches of pink plaster!

The next challenge for us is to assess the cracks at the east end of the chancel on either side of the window and get an estimate for repairing and redecorating that part of the church. Hopefully the buttress repair will mean that the concern of 'buttress collapse' will have been removed so we can plan to work towards having the whole church

looking pristine and ready for future generations.

There has been a parish church here for 800 years, it is here for everyone, and the PCC of Pettistree church hope that all villagers know that they are always welcome to ask the vicar or a member of the PCC to call on them, or to answer any queries regarding the church.

The Christmas services start with the Carol Service on Sunday morning Dec. 21st and continue with the candlelit celebration of Holy Communion on Christmas Eve at 11.30 pm with Rev. Rob Rose, and on Christmas Day morning Rev. Margaret Blackall will lead a less formal Communion service at 9.30 am. All are welcome to these services. On the Sunday after Christmas December 28th, the only service held will be a joint benefice service at 11.00 am at All Saints Wickham Market.

Maggie Hallett

Further recognition for Pettistree People



Maureen and I were very pleased to receive the runners up award for Newsletter of the Year, Smaller Councils category, on the 12th November at the Suffolk Association of Local Council's AGM at Henley.

Yet it was also disappointing for last year we won.

We therefore will have to try harder in the coming year and hope we can receive even more news and articles to provide an excellent newsletter every three months. We do rely on you and of course Pat for proof-reading and Carol, Kath, Saska, Cath, Jill and Tony to distribute them, all expertly printed by Sharward Services.

Mike Watts

An Evening with Charlie Haylock

Cath Caudwell welcomed everybody and gave a brief outline of the work carried out by Pettistree Heritage. After many years of valuable work, Joan Peck had stood down as Local History Recorder and researcher of local history and the village records had been moved, on a loan basis, to Suffolk Record Office. The transfer of data was made easier thanks to the computer program set up by Chris Garner. The members of Pettistree Heritage continue to research records and maintain and update information on the village and its residents.

Cath then welcomed Charlie Haylock, our speaker for the evening. Famed for his one man shows, his knowledge of East Anglia, together with his books and regular appearances on Radio Suffolk he needed little introduction. It soon became clear

Charlie's talk would not be bound by time when he mentioned his 30 minute slot in Lesley Dolphin's programme on Thursday afternoon had become the 40 minute half hour.

The subject for the evening was the History of Spoken English, but before embarking on the serious business, he had to say how pleased he was to be back in Suffolk after 3 days in Norfolk. The rivals are in a class of their own when it comes





to inter-county banter with their use of the one liner, delivered at all times with a deadpan face. The art was ably demonstrated by Charlie during the evening!



Charlie took us on a journey through the centuries.

The language input by the Romans was extremely limited and nigh on non-existent. He explained it was because the Romans were an occupying force only. They Latinised existing British place names for their own records. A large proportion of the army were mercenaries from Northern Europe and spoke Germanic tongue and would not have spoken Latin. Eventually they all left our shores, leaving behind a British people talking a British tongue. Later the Angles and Saxons arrived and laid the foundation for the English language. The two invaders had very much in common, and being from Northern Europe their language stemmed from the same Germanic roots. They spoke the same language, but in different dialects, especially the pronunciation of the letter "G". Saxons would say Gippeswick and the Angles would say Yippswich which later became Ipswich. Wagen became waggon from the Saxon and wayen (wain) from the Angle and there are many other examples, Further links to the Germanic root can be found in the massive Viking influence, an example being the pronunciation of "sc". Anglo Saxons as "sh" and Vikings as "sk" eg ship/skip, shoal/school, shirt/skirt, and many more.

English language is not an easy language when it comes to pronunciation; the use of the letters 'ough' in a word being an example. According to Charlie there are ten. James Hazell had suggested on radio the letters should in all cases be pronounced 'ow' but Charlie soon put him right. How many members of the audience tried to think

of ten examples as they enjoyed the refreshments ?

After a well earned break Charlie carried on the journey. In the 1400's Italy was the centre of art and culture and in England noblemen and church hierarchy communicated in Latin resulting in a further expansion of the vocabulary. When Henry VIII was excommunicated by the Pope the English language came to the fore with the printing of Tyndales First English Bible and Elyot's English Dictionary. Standard English came into being. During the time of the Stuarts the Dutch made their mark on the language. If it had not been for the Dutch, Easton would be without the crinkle crinkle wall.

The rise of the British Empire brought words into the vocabulary from all corners of the earth: the ladies would be lost without shampoo and what would the Greyhound serve on a Thursday night without curry. The word which caused the most laughter was the Irish word Tory (English spelling) which means robber - yes Charlie was not joking. He also brought the house down with his father's definition of an expert.

Charlie has a finely tuned ear for dialects. He explained the nose, mouth shape, tongue position and throat usage all have a distinct bearing on the sounds. Much to the amusement of the audience, he ably demonstrated dialects from all parts of the UK. As to the most popular rendering, if our eyes had been shut would we have thought Prince Charles was in the room? He explained why Suffolk folk are mistaken for Aussies, both in this country and abroad. He also gave examples of how the Suffolk pronunciation today has not changed since the time of the Angles. He concluded with a couple of poems.

Cath thanked Charlie for a most entertaining talk.

After the raffle was drawn there was a further opportunity to purchase copies of his books and CD. Charlie kindly donated the royalties from these sales to the Pettistree Heritage funds.



Evelyn Whitfield



To the Arctic Circle—and Beyond!

I had always wanted to see the Norwegian fjords and we chose to take a cruise on the Marco Polo from Tilbury as this avoided having to fly to Norway. We knew packing would be complicated as the boat is air-conditioned and therefore warm, but it would be very cold both on-deck and on-shore. Apart from a delay boarding, the embarkation process at Tilbury was fairly simple and we were shown to our cabin. Luckily due to a booking error we had been up-graded to a suite, this meant that we had reasonable space, tea and coffee making equipment and fresh fruit, however as we were towards the bow of the ship the angle of the floor was bizarre in that it actually sloped in three different directions. This was not a problem during the day but did lead to some difficulties when negotiating the trip to the en-suite at night particularly if there was some swell!

The first day was spent 'At Sea'. There were various activities and lectures organised and in the evening we were invited to dine at the Captains' table for the formal dinner (dinner jackets and posh frocks) which was a new experience. The captain was Greek, 1st officer Ukrainian, finance controller Greek and the only British officer we met was the customer relations manager.

During the trip we sailed up several fjords to small villages and saw many spectacular waterfalls, there had been a great deal of rain and the snow was over a month late this year leading to problems of land-slips and flooding. All the Norwegians we met were delighted to see us and spoke excellent English. Apparently children start learning English during their first year in school. We were not surprised to be told by a Norwegian guide that the further North you go the larger the families as "There is not a great deal to do during the long winter nights". In Olden village there was a particularly fine wooden 'Old Church' no longer used regularly as it has no electricity or any form of heating, but it is on the site of the original church from the 12th century so similar in age to Pettistree church. On the right hand side of the church the pews were equipped with hat stands of birch branches; the men and women sat separately so no need for hat-stands on the left!

We saw several lovely sun-rises and sunsets and a beautiful sunrise greeted us when we arrived at Leknes harbour in the Lofoten Islands. Here things

began to deviate from the itinerary as the boat ran aground and eventually we were tendered to the jetty for a planned visit to a Viking museum. Our predicament was featured in the international press. The ship refloated at high tide and we left Leknes later than intended, and were escorted by the Norwegian coastguard overnight to Tromso to have the ship's hull thoroughly inspected by divers. Tromso appeared to be a very interesting town unfortunately as it was Sunday there were a few museums open but no shops.

We and around half the other passengers, succumbed to a 'flu type bug so I decided not to go ashore at Honningsvåg which is the most Northern city in Europe. I did not miss much as due to the weather conditions (a blizzard) all trips were cancelled and there was very little shopping possible either because the whole area suffered a prolonged power cut. Jeff managed to get some powerful Norwegian cough sweets and restocked our paracetamol supply! The highlight of the trip came a couple of days later as we sailed South past Tromso at around 9.00pm when the Northern Lights decided to put in an appearance. We put on warm clothes over our night attire went on deck to marvel at the display. I was particularly pleased to get some photographs and I stayed on-deck watching for about an hour. It was very dramatic as the sky was particularly clear and there was a full moon and many stars also clearly visible.

During the next few days we called at more towns including Narvik, and Andalsnes. The train trip we had planned there was cancelled as there had been a landslide and they were waiting for the army to do a controlled explosion to make the line safe! Instead we walked into the village and found a very pleasant small coffee shop where we had a delicious hot chocolate with ginger and chilli, ideal for those recovering from a nasty cough.

The final stop before returning to the UK was Bergen. It was not at its best in squally rain and sleet and we found that the famous fish and general market was closed due to a 'rat' problem. We did walk through the Hanseatic quarter with its fascinatingly wonky wooden houses and a very nice group of shops where, once again the locals were very welcoming. The ship was the last tourist boat of the season so when we left we were entertained by the town brass band from the quay;

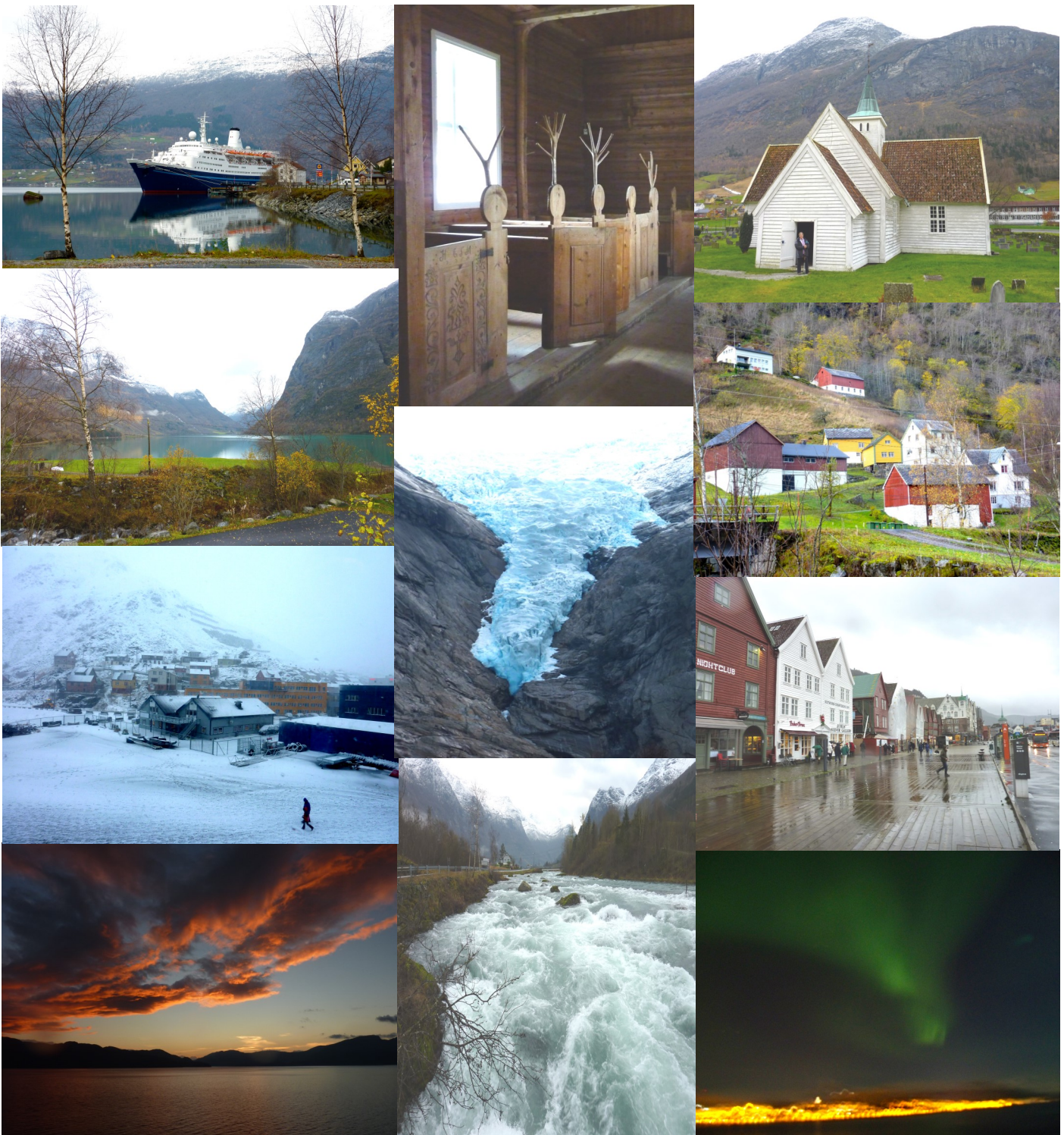


a really nice gesture.

Our last day was spent once again 'At Sea' and various activities were organised by the very efficient and always cheerful Cruise Director, there was a simple but moving Service of Remembrance including a whole ship 2 minute silence. We did our packing, as apart from hand-luggage, bags had to be placed outside the cabins for collection by midnight. We had to be out of the cabins by 7.00am so they could be made ready for the next visitors,

this then meant that we along with the other 800 passengers had to find somewhere to sit with our hand-luggage until we were able to leave the ship around 9.00am. At the end of this trip I can say that I am pleased to have seen the Fjords and the Northern Lights but I was generally unimpressed by this ship and do not intend to travel with this cruise line again.

Maggie Hallett





A concrete puzzle!



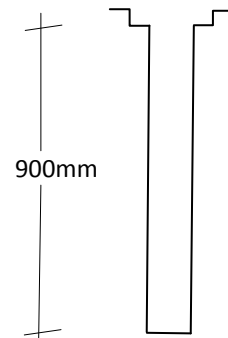
Four holes, each 150 x 150mm square and 900mm deep formed in concrete have been found in opposite verges of Thong Hall Road.

Two of them have 250 x 250mm concrete lids, with "TOP" on them, which would have been inscribed in the wet concrete, and a key hole. The rear of the two largest concrete bases are roughly levelled with steel reinforcement rods in them. This indicates they were large blocks.

Enquiries have been made of Suffolk County Council Archaeological Service Conservation team who, at present, can shed no light on what they were used for or why they were installed. On the assumption they are a WWll installation, they could have been used for a traffic control barrier. But why were they sited here?

Can any of you resolve this, for it may shed some light on our village's role in WWll

Mike Watts



Carols in the Barn



Once again we would like to invite you to come and sing Carols in the Barn at Church Farm, Pettistree, on Friday 19th December at 7.00 for 7.30pm.

The singing will be followed by one of Jim and Pauline's BBQ's.

We regret that places are limited, so please contact us early on 01728 746708 to book your places, and if you have a favourite carol that you would like to be sung please let us know.

We ask for donations towards the BBQ and our chosen charities, which are The Starlight Children's Foundation and our son Stephen's Orphanage and Refuge Centre in Indonesia - Yayasan Gunung (www.gunungan.org).

Rita and Dick Smith



Seasonal Word Search + extras

With compliments of Pat Deliss

R	Z	B	C	H	R	I	S	T	M	A	S	E	O	L
E	C	A	R	D	S	T	W	U	R	A	T	S	G	A
P	U	B	A	I	O	U	S	R	V	I	M	I	S	P
A	B	Y	C	C	N	Y	A	K	R	I	F	L	E	T
P	C	G	K	I	N	G	S	E	W	T	E	L	N	S
X	R	I	E	F	O	D	S	Y	I	G	U	A	E	N
H	N	E	R	O	J	N	T	R	N	C	S	G	C	O
G	U	E	S	S	U	E	U	A	E	A	A	T	W	I
B	L	E	C	E	A	G	O	P	E	S	T	K	T	T
I	D	O	F	J	N	O	R	H	U	X	H	R	E	A
R	H	I	E	E	R	T	P	A	T	M	O	U	Z	R
C	O	L	E	S	I	O	S	Q	P	P	A	N	T	O
R	L	X	P	U	D	D	I	N	G	P	E	G	A	C
Y	L	M	I	S	T	L	E	T	O	E	A	L	O	E
S	Y	G	D	O	E	N	I	R	E	G	N	A	T	D

- | | |
|-----------------|----------|
| Christmas Cards | Presents |
| Tree | Gift |
| Decorations | Paper |
| Crackers | Panto |
| Pudding | Yak |
| Turkey | Got |
| Goose | Dip |
| Pheasant | Nero |
| Sausages | Puma |
| Oil | Dot |
| Sprouts | Brings |
| Trifle | Cage |
| Jelly | Hut |
| Cake | Pest |
| Chocs | Col |
| Holly | Rifle |
| Mistletoe | Rite |
| Tangerine | Lap |
| Kings | Peg |
| Baby | Sill |
| Jesus | Sat |
| Crib | Rung |
| Star | Ties |
| Angels | Tug |
| God | Rug |
| Wine | Ass |
| Grappa | Juan |
| Port | Pat |
| Tea | Aloe |
| Pub | |
| Stocking | |
| Guess | |

Poppy Appeal

The Poppy appeal this year has once again been a great success; we would like to say a big thank you to the collectors Pauline and Jim Jarvie, Kath Hilton and Maureen Stollery who venture out in all weathers each year. Also thank you to the Three Tuns, the Greyhound and the Church.

Gift Aid on £389.00 gave us **£97.00**.
The grand total from Pettistree and Loudham was:- **£686.66**.
Give your selves a big pat on the back.



Young writers and photographers-Your attention, please.
Twelve months ago we invited young writers and photographers in Pettistree and Loudham to send us their news for publication in this newsletter. It is very disappointing that we have received nothing. Yes, no response! Can you do better for the year ahead? We really do hope so. Come on; have a go.

100 CLUB	1st Prize	2nd Prize	3rd Prize
September	Jeff Hallett	Mark Welton	Graham Forder

The draws for October and November will take place in January.



Viridor

Transforming waste™

Members of Pettistree Parish Council recently visited the Viridor Masons Materials Recycling Facility (MRF), at Great Blakenham. We were greeted by Carole Locke and shown into the Education Suite where we were given a presentation by Carole which included information on how the unique partnership between Viridor Ltd and the Suffolk Recycling Consortium was formed. The Consortium is made up of six District and Borough councils across Suffolk – Babergh, Forest Heath, Ipswich, Mid Suffolk, St Edmundsbury and Suffolk Coastal. Masons Materials Recycling Facility (MRF) receives the recyclate from the Consortium members.

We then donned hard hats and headphones to receive a running radio commentary from Carole as we proceeded around the cavernous building. Just as well for the noise was deafening.

During the tour, we saw first-hand the many different processes that take place to sort our recyclate into separate material types. The



mountain of material is scooped up by a large digger to start it on its way into the machinery. These include large revolving drums called trommels, ballistic separators, a series of conveyor belts, magnets, and hi-tech cameras (optical sorters) which identify the plastics which are then blown into separate bunkers. It was fascinating to see tin cans being “sucked” vertically onto a crossways magnetic belt and aluminium cans passing through to be repelled off the line, by an electric eddy current. Approximately 25 ‘pickers’ are employed by Viridor to hand-pick contaminated and non-recyclable items from the belts – a way of ensuring quality control standards.



At the end of the sorting lines the different materials are fed into balers to be crushed and wired, ready for collection by container lorries. Much of it is re-used in the UK, with the remainder being exported to European and Far Eastern countries.

After the tour we had the opportunity to ask questions. We discovered why we should NOT put shredded paper, plastic carrier bags and film into our recycling bins: unfortunately these materials can clog the machinery at the MRF and bring the entire plant to a grinding halt!

Materials welcomed at the MRF are loose paper and card, cans and tins, aluminium foil and foil containers, plastic bottles (with the lids removed – but these can still be recycled) and moulded plastic containers such as yoghurt pots, ice cream tubs etc. All materials should be clean and dry – and put into your recycling bin loose.

We had wanted to organise a larger party of residents but unfortunately only three places were available at very short notice, which were taken up by Ruth Leigh, Jeff Hallett and Mike Watts.

Viridor have unfortunately now discontinued these educational visits so we were very fortunate to get an insight into what happens to the contents of our blue bins.





Ringers News



Despite the orange plastic and challenging entry into the ringing chamber no practices or Sunday service ringing have been missed. We had a ringing outing to Colchester back in September and are looking forward to our AGM at the end of the month. A half muffled quarter peal was rung on Armistice Day, immediately before almost 40 people met at the War Memorial for a short service, wreath laying and silence at 11am.

We are looking forward to future practice nights in the newly redecorated nave.

Mary Garner

Beware www.ammy.com!

I recently received yet another telephone call purporting to be from the Windows service desk. This time I went along with the persistent "Indian" girl and stopped when I suspected what the next move would be.

She called to tell me my computer was compromised by errors but she could fix it. This entailed holding down the Windows key and r key together, which brought up the Run box; then enter "eventvwr" - short for event viewer - and then click on OK and enter www.ammy.com.

DO NOT click on www.ammy.com! Although this is a legitimate software site that provides remote

access to its users to take over control of your computer it is being used for malicious use of its' software.

Ammy Admin state "If you receive a phone call claiming to be from Microsoft or someone claiming to work on their behalf, telling you that you have a virus on your computer or some errors which they will help you to fix via Ammy Admin, it is definitely a scam". "Treat all unsolicited phone calls with scepticism and do not grant access to your computer to anyone you don't know personally".

I hope this forewarns you.

Mike Watts

Quiz night

Saturday 18th October and at the Village Hall a crowd was waiting in anticipation. Why? Quiz Night!

As ever Dave Caudwell was in charge and he had prepared numerous questions to get those little grey cells working. At half time, delicious Chilli con Carne with rice , all cooked by Pauline, was served.

At the end of the quiz all the points were totted

up, and the Badger Sett—ex colleagues of Jim Jarvie— were declared the winners.

Afterwards a draw took place for a super hamper, kindly donated by Clare Signy ; Steve Wassell having the winning ticket.

A big thank you must go to all those who helped make the evening such a success; £376 was raised, all of which goes to the upkeep of the Village Hall.

Jenny Ayris

News in Brief

War memorial. Quotations for the work have been received, funding has been approved and the work should be undertaken in December.

Parish Meeting recording. Legislation is now in place for Parish Meetings to be recorded in video and audio formats by the public. Full particulars are available from the Council.

Planning. There have been no applications nor approvals.

Pettistree Web site. Consultation on the long standing upgrade will soon take place .

If any resident has a view on its' presentation and content please contact Chris Garner, Ruth Leigh or Mike Watts



DIARY DATES

Parish Council meeting 10th February 2015 in the Parish Room at 7.30pm

PROPS orders. Next cut-off dates
None in December, then 6th January, 3rd February, 7th April 2015

Carols in the Barn 7.00 for 7.30pm on the 19th December See page 8

Church services See page 4

Regular events

Bellringing 7-9pm on Wednesdays in St Peter & St Paul's church.
Contact Mary Garner on 746097

Carpet Bowls at 7.30pm on Thursdays in the village hall.
Contact Eric Dowker on 01728 746419

Pilates on Monday evenings in the village hall.
Contact Sam Whitfield on 07716 316294

CONTACTS DIRECTORY

Parish Councillors

- Jeff Hallett, Chairman, The Laurels 01728 746210
- Mike Watts, Vice Chairman, Burways 747202
- Mary Chilvers, Coopers Cottage 746123
- Steve Hind, Flint Cottage 746532
- Terry Rowles, Low Farm 01394 460422
- Parish Clerk,** Clive Mann 01394 421628

County & District Councillor

Michael Bond michael.bond@suffolkcoastal.gov.uk

District Councillor

Jim Bidwell jim.bidwell@suffolkcoastal.gov.uk

Neighbourhood Watch

Dave Caudwell, Rogues Cottage 747170

Vicar Rev John Eldridge 746026

Church Wardens Maggie Hallett 746210

Brian Nobbs 746590

Bellringers Mary Garner 746097

Village Hall Booking Pauline Jarvie 745030

Age Concern Mike Manning 747321

The Greyhound 746451

The Three Tuns 747979

Wickham Market Health Centre 747101

Wickham Market Post Office 746201

Wickham Market Library 747216

Dial-a-Ride 01473 281194

Village web site www.pettistree.suffolk.gov.uk

Webmaster webmaster@pettistree.suffolk.gov.co.uk

**Pettistree Village
Hedge Cutting**

I have been put in charge of coordinating the village Autumn hedge cutting.

It would be most helpful to know,

- Your e-mail address
- ⇒ Your mobile number
- ⇒ If you need hedges cut
- ⇒ Please contact me by e-mail on louisjdeliss@aol.com

Or 01728 745083 or 07885636632



Louis Deliss
Home Farm Barn

Please note this newsletter depends on you sending us your news and stories and photos

Don't be shy to share them with your fellow residents!

Mike Watts and Maureen Stollery— The Editorial Team