



Pettistree People

A newsletter for all the residents of Pettistree and Loudham

Pettistree Parish
Council ©

Issue 65
June 2014

Chairman Jeff Hallett stands down after 7 years service

This will be my last newsletter as Chairman of Pettistree Parish Council because Elaine Boardley agreed to be nominated and subsequently elected as “Chair” at the AGM of the Parish Council on 13th May. I had said for several months that I thought it was time for me to stand down, having been in post for seven years and having previously served a term of three years as Chairman. Elaine has been a member of the Parish Council since July 2008 and has recently served as Vice “Chair” following the resignation of Maureen Stollery after so many years of service. Elaine’s history of interest in local matters, and of accountancy, with all its attention to detail, means that she is ideally suited to her new role.

The AGM of the Parish Council was also notable for the attendance and co-option of Steve Hind as a Parish Councillor, filling the vacancy left by Peter Hayward’s resignation at the end of last year. The Parish Council is now back to full strength with a good mixture of experience and “new blood”, supported by our very able Parish Clerk, Clive Mann.

Public areas around the village always need regular attention. The Annual Litter Pick went ahead on Sunday 23rd March with a small group of nine volunteers meeting at “The Greyhound” car park and then fanning out around the village before some returned to the pub. Only a relatively small amount of litter had to be cleared up thanks to our regular walkers continuing to clear litter as they come across it. This is in contrast to the more worrying fly tipping that

has occurred occasionally. A fridge/freezer recently had to be cleared from Thong Hall Road with the help of the District Council.

As reported elsewhere in this issue our celebrations for the Queen’s Diamond Jubilee have now been completed with the planting of the apple avenue in the churchyard. We will get a good show of blossom from next year and should have apples to pick in two or three years time.

Rapid growth in the recent wet and then warm weather has encouraged the verges to grow with grass and flowers, and the restored grass on the village green is looking particularly healthy. However, the high growth on the verges calls for extra care when driving because of reduced visibility, until the District Council carries out its mowing of the verges.

By the time this is published I expect that the cleaned and re-painted “Fisons” village competition sign will have been re-erected on the village green. We now have to arrange for careful washing of the actual village sign, hoping to avoid re-painting for a few more years. Plans to wash the war memorial are also in hand. This also has to be done with care to avoid damaging the surface of the stone and especially the inscriptions. Professional help may be needed if the inscriptions are still not easily legible.

Best wishes to Elaine as our new “chair”. I shall continue as a councillor but now hope to be able to spend a little more time with my Suffolk Punch and donkeys, and perhaps with the rest of my family!

Jeff Hallett

Inside this Issue

<i>Apple tree planting</i>	2
<i>Village Hall report</i>	3
<i>Annual Parish Meeting</i>	4
<i>Ringers success</i>	4
<i>Church open weekend</i>	5
<i>WMSA Extravaganza</i>	6
<i>Dennis Jordan obituary</i>	6
<i>100 Club</i>	6
<i>NHS Healthcare advice</i>	7
<i>Beetle Drive & Race Night</i>	7
<i>Planning</i>	7
<i>Pettistree Heritage AGM</i>	8
<i>Pat’s crossword</i>	9
<i>Therese Coffey office</i>	9
<i>Presmere pond reflections</i>	9
<i>Neil Moss remembered</i>	10
<i>Power cut advice</i>	11
<i>Diary Dates</i>	12
<i>Contacts Directory</i>	12





Tree Planting for the Jubilee Apple Avenue in the Churchyard Saturday 3rd May 2014

As part of the village celebrations for the Queen's Diamond Jubilee it was agreed that an avenue of apple trees would be planted in the Churchyard to replace the avenue of flowering cherry trees that had all died of old age and been partly replaced by yew trees and some cherries that had also died. It took quite a long time to get the necessary permissions to alter the churchyard and then to order the actual apple trees. This why it took until now to get the trees in the ground.

We had planned that the apple trees would be full-size (on M25 rootstocks) so that they would be vigorous enough to grow in grass, and tall enough for a small tractor to get underneath for grass-cutting etc. This is the type of tree found in traditional Suffolk orchards and it does not necessarily need pruning. The intention is that the fruit can be picked and used by village people or left for the birds if there is a surplus. The orchard avenue is on Church land but it is a village asset and is open to all.

We have had very helpful advice from the Suffolk Traditional Orchards Group (STOG) and from Graeme Proctor of Crown Nurseries. Woods Nurseries very generously agreed to provide the apple trees and some of the materials needed for planting. They do not normally sell apple trees as big as ours so they ordered ten trees specially from a specialist grower who grafts the saplings. I have attended two STOG grafting courses and four of my successful grafts have been included because the varieties were not available commercially.

The choice of varieties was quite difficult because we wanted apples with Suffolk or ecclesiastical connections, but also varieties that were good for eating and keeping. There are several that are also good for juice and one actual cider apple.

Our county and district councillor, Michael Bond, approved a grant of £500 from his locality budget to support the scheme. Most of this was spent



employing an experienced grave digger to clear the site before planting. There are no graves in the orchard avenue area but his experience and machinery meant that no damage was done and no debris left behind.

The trees were eventually planted much later in the Spring than would normally be advised but the grower had kept them in cold storage so they were in optimal condition to burst into life after planting. The trees are 20 feet apart but will grow to fill the spaces.

My request at short notice for a working party to do the planting met with an excellent response. On Saturday morning we had nine main diggers and several more light-work helpers. We did so well that all 14 trees were planted, staked and guarded by the end of the morning. Eight of the group is shown in the photograph below.



L-R Terry Peake, Kevin Blythe, Steve Hind, Jeff Hallett, Jim Jarvie, Dave Caudwell, Steve Wassell, Tony Franklin (+ Eric Dowker absent)



Maggie Hallett provided coffee and Jacki Franklin brought doughnuts to sustain the workers. Some of us finished off putting my Suffolk Punch manure mulch around the trees in the afternoon. Several other volunteers who could not come on Saturday were told that they would not be needed on Sunday as the work had gone quickly with the large team.



“This is how you do it, Mr Wassell!”

Apart from watering the trees regularly we have one more major task to complete. This is to make and fasten permanent labels to the trees so that knowledge of the varieties is not lost.

The main task now is to keep them well watered for the rest of the year. We also need to make and

fix permanent labels as every tree is a different variety. The ten large trees are:-

- | | |
|---------------------|------------------|
| Adams Pearmain | Ashmeads Kernel |
| Blenheim Orange | Bramley Original |
| Cox's Orange Pippin | Dabinett (cider) |
| Ellisons Orange | Egremont Russet |
| James Grieve | Laxtons Superb |

The two medium trees were grafted last Spring and are:

- | | |
|-----------|---------------|
| Dr Harvey | Lady Henniker |
|-----------|---------------|

The two very small saplings were only grafted this year and are:-

- Clopton Red
- Beagley dual purpose (Variety to be identified)

The rather large home-made tree guards are 1.8 metres high which should protect against deer as well as rabbits.

This type of tree can easily live for 100 years or more so we can be proud of a really long-lasting community project.

Jeff Hallett

Pettistree and Loudham Village Hall Committee Chairman’s report May 2014.

The Village Hall has had another successful year and continues to be used on a regular basis by a number of diverse activity groups, including Pilates, Zumba and basket weaving. In addition, walking and rambling groups have used the car park as a setting off point. The hall has been used for a number of children’s parties with an upper age limit of 12 years. We have also held fund raising events throughout the year; a Race night and Beetle drive with a fish and chip supper, Burn’s night and a French Boule/Petanque day, were all well attended.

The Pettistree and Loudham ‘Food Fest’ provided an opportunity for villagers to demonstrate their culinary skills by preparing their favourite dish. Recipes were collated by Rob Martin who will be pulling them together into a book.

We intend to hold an event on the village green on the August Bank Holiday Monday to include a treasure hunt followed by a bar-b-que.

I have been ably supported by all the committee members and non-committee members throughout the year and my thanks go to them.

Jim Jarvie Chairman



Annual Parish Meeting

This meeting took place at the Village Hall on 20th May. It was again disappointing to see such poor interest by our residents. Just 3 persons! Well outnumbered by presenters of village activity reports and the Parish Councillors.

The Chairman's Annual Report was presented having been drafted by Jeff Hallett and approved by his successor Elaine Boardley. To avoid repetition of matters in Jeff's report on page 1 I note the following additional ones-

- The path alongside the B1438 is really not fit for mobility scooters and push chairs and has been reported to Highways.
- The Police reported Pettistree and Loudham has relatively little crime, well below adjacent villages.
- The Three Tuns and The Greyhound are providing excellent complementary services.
- There are now some 25 businesses operating in our village; a remarkable number

considering our size

- The Pettistree and Loudham website is being revamped by Tony Franklin and Chris Garner and will carry the full text of the Chairman's Annual Report.
- Guidance from central government on planning remains confusing and decisions have certainly not been devolved to the local community.
- Sizewell C development. Whereas we should not be directly affected by this we have been represented by a parish councillor at the five Community Forums, to date.
- Finance. Expenditure during 2013/14 was £4536, including £1725 for reinstatement of the green, and income was £2909. Reserves are now approximately £4000.

In conclusion we form a very attractive and effective community, with a good mix of residential and business property.

Ringers Sweep the Board

On 3rd May two teams of six entered the Striking Competition for the South East District of the Suffolk Guild of Ringers held this year at Campsea Ashe. In fact there were two categories and we entered a team for each. The object for both was to ring as evenly spaced as possible over a period of about five minutes. Pettistree Ringers were very excited and pleased to win both categories.

About thirty towers could have entered teams. In the event the ten teams taking part represented only six of those towers. It is the first time Pettistree has won since 2005.

Mary Garner

The winning teams

L-R:-

Chris McArthur,
Hazel Judge,
Jonathan Stevens,
Kate Eagle,
Bill Lloyd,
Suzanne Stevens,
Mike Whitby,
Ruth Munnings,
Chris Garner,
Mary Garner,
Richard Munnings,
Pippa Moss





**CHURCH OPEN WEEKEND
AND REPAIR APPEAL**

**ST PETER & ST PAUL
PETTISTREE WITH LOUDHAM**

Saturday and Sunday June 28th and 29th

10.00am – 5.00pm

Pettistree Church will be open with a display of repairs undertaken over the years and repairs now needed. Please come along and see what is being done in the Church and the new Jubilee Avenue of fruit trees

Teas coffee and cake served each day

Church Wildlife Display

Plants Cakes Books

Barbecue

EVERYONE WELCOME



Wickham Market School Extravaganza 2014 on 14th June

Following the huge success of last year's inaugural Wickham Market Community Extravaganza, Wickham Market School Association (WMSA) would like to invite all our friends in Pettistree to join us on the big day. We are holding our event on Saturday 14th June.

The fun starts on the Hill at 10.00 with Morris dancing, mask making and a treasure hunt, run by Town Team. There will be a procession up Dallinghoo Road to the school led by a samba band at 11.45 where the second part of the day runs from 12-5. There will be an arena with professional sound, a food court, beauty tent, traditional games, licensed bar, shopping area, village organisations, football and tennis events, inflatables and a vintage car and motorcycle display. It is the school's 80th anniversary, so we invite you to enjoy a historical display about the school, past and present.

Entrance is completely free! We look forward to welcoming you and your friends and family. Last year, we were delighted to see so many Pettistree

People at the event – over 1500 joined us. One of the many highlights was the Royal Flypast which will be happening again this year. Whether you come by yourselves or with younger members of the family, we can guarantee that there will be plenty for you to do and enjoy.

The WMSA gratefully acknowledge the support of their sponsors. We are delighted that many Pettistree businesses have joined us as sponsors and donors to the Grand Prize Draw. Many thanks to Louise and Stewart at the Greyhound- they will also be selling street food on the day, Presmere Day Nursery, White House Kennels, the Paella and Tapas Company and KindWater Water Softeners.

Ruth Leigh

WMSA are pleased to have won the South of England PTA-UK magazine Gold Star award for their piece on the 2013 Extravaganza in the category "Community Links". They are going to the awards ceremony on 11th June to see if they have won the national award!

Dennis Jordan

The funeral has taken place of Dennis Jordan of Wickham Market who, prior to failing health, worshipped at St Peter and St Paul's regularly. Dennis served with the RAF operating a Bloodhound Missile system until the disbandment of 85 Squadron at RAF Bawdsey.

One of his RAF colleagues spoke of the service –

It was a truly dignified and uplifting celebration of a man's life. A service fitting for a man with an incredible and unshakeable faith, a quietness of character, unassuming and blessed with such empathy for all the people he came into contact with. This quiet corner of Suffolk stood still for a brief moment, the sun even decided to break through the overcast and nestled above the old churchyard at Pettistree as this proud Suffolk man was laid to rest.

Joan Jordan

100 Club

The draws for the months of April and May have been delayed.

The Treasurer has explained this is due to the annual renewals having not been completed.



Getting the right healthcare advice and treatment

If you feel unwell, here's some advice which we hope will help you choose the right route to fast treatment and get well soon!



For good **self-care**, keep your medicine cabinet well-stocked with the items you and your family need.

For minor illnesses, advice on medications and colds, coughs, minor burns, strains and sprains - or if you need emergency repeat prescriptions - contact a **pharmacist**.

Your **surgery** is great for advice on health problems, and examinations and treatments.

All main surgeries are open between 8am and 6.30pm Monday to Friday. On the day appointments are available if your need is urgent.

If you need help when your surgery is closed **call 111**. You will be asked for information to direct you to the correct service, or to arrange for an ambulance where appropriate.

Ipswich Hospital and West Suffolk Hospital have Emergency Departments for **emergencies only**. Call 999, only for life-threatening illnesses or injuries.

Communications Team, Suffolk NHS

Beetle Drive and Race Night in the Village Hall

As ever, Mike Manning was compere for the evening on 5th April. Firstly a flurry of feelers and legs as the Beetle Drive got underway accompanied by furious dice shaking- how is a "six" for starters so elusive? After fast and excited play, Steve Jones, an ex-colleague of Jim Jarvie, emerged the winner.

Then fish and chips, provided by the Flaming Fryer, arrived. After we had wined and dined the tables were re-arranged and the second part of the evening commenced.

What do The Old Rogue, Happy Hungarian, Loudham Lady, Mr Stumpy, Walnuts Wonder and Presmere Prancer have in common? They were all taking part in one of horse racing's most famous events-no, no, not that little meeting up at Aintree, but here!

Mike morphed into Peter O'Sullivan and with assistance from Mike "Jockey" Barnes racing was underway. So much depended on the throw of the dice; in this instance two red and fluffy ones much nibbled by Pettistree mice particularly on side 4 which resulted in a roar of "mouse" when it landed.

Yet again Steve Jones was the winner. Never two but three they say- but no, he did not win the Lottery that night!

Some 40 people attended the evening and £190 was raised all of which goes towards the upkeep of our Village Hall.

Our sincere thanks go to all who made the evening such a success and to Clare Signy for the rosettes.

Jenny Ayris

Planning

The following applications have been approved by SCDC-

DC/14/0421/CLE by Mr and Mrs S Boardley of 1 Hungarian Close to lift restriction to occupation by agricultural or forestry persons.

DC/14/0817/FUL by Mr G Hind of Flint Cottage for a single storey extension

DC/14/0011/FUL by Mr M McGee of 4 Hungarian Close for single storey front and rear extensions.



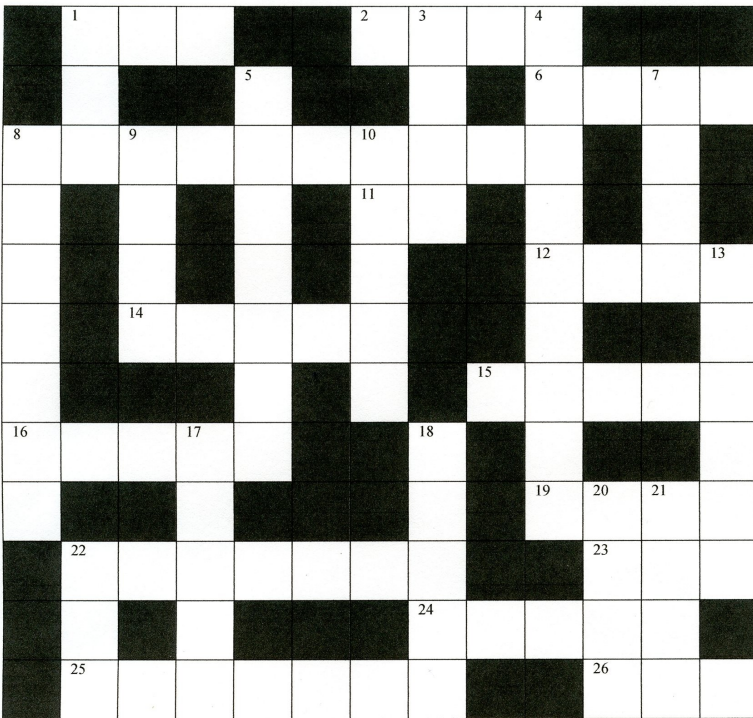
Annual General Meeting
of
Pettistree Heritage

Tuesday 10th June 2014
at 6.30pm

The Greyhound, Pettistree

*Do come along and find out about your Local History group,
about recent changes to the Pettistree Archive and a discussion
on future plans.*

Support your local pub at the same time!



Compiled by Pat Deliss

Across

- 1. Luggage label (3)
- 2. One of our Halls. (4)
- 6. It's over the house. (4)
- 8. Our village. (10)
- 11. 3rd person singular. (2)
- 12. Meeting place (4)
- 14. Picturesque view. (5)
- 15. Head of the Commonwealth. (5)
- 16. Larger Jars. (5)
- 19. White pigeon. (4)
- 22. Our Parish. (7)
- 23. ___ about (3)
- 24. Game with weighted balls. (5)
- 25. Garden flower. (7)
- 26. Expected time of arrival. (3)

Down.

- 1. The definitive article. (3)
- 3. River at Yarmouth. (4)
- 4. Our Pub. (9)
- 5. They use bells at church. (7)
- 7. Egg shaped. (4)
- 8. Mondays at the Village Hall. (7)
- 9 & 10. Our other Pub. (5,4)
- 13. Came down. (6)
- 17. Disturb. (5)
- 18. Wednesday at the Village Hall. (5)
- 20. Glad eye; stare. (4)
- 21. Huge. (4)
- 22. Facial feature. (3)

Dr Thérèse COFFEY MP

My new constituency office is in Felixstowe.

Constituency **Westminster**
York House **House of Commons**
2 - 4 York Road **London**
Felixstowe **SW1A 0AA**
IP11 7QG

01394 285 218

0207 219 7164

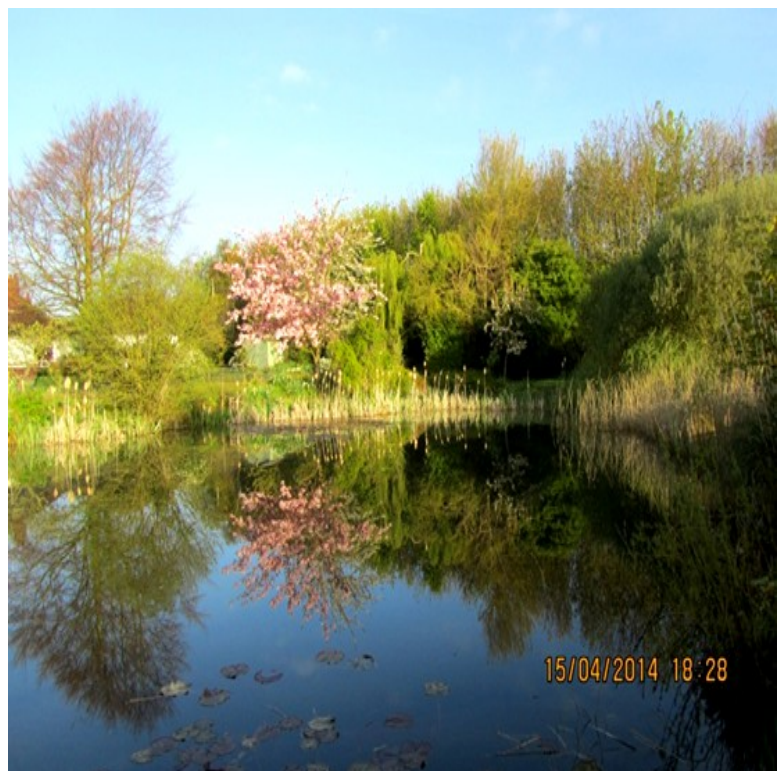
therese.coffey.mp@parliament.uk

www.theresecoffeymp.com

**www.facebook.com/
theresecoffeymp**



Reflections at Presmere Pond



Maureen Stollery



Neil Fraser Moss 27th March 1964 – 29th March 2014

Neil was born in Ipswich to Ron and Pat Moss now of Crowfield. Having attended St Matthew's Primary School, then subsequently Creeting House School and Debenham High School, Neil started his career as a baker at Debenham Bakery after leaving school. He then became a Master Baker, then buying The Bakehouse in 1989, he has always been very hard working both in his career, home and his hobbies. Neil came from a very loving and close family, he had a younger sister called Natalie and an elder brother called Aaron.

Neil and I met 13 years ago at a friend's barbecue who was one of the few friends I kept in contact with from school, as it turned out I also went to Debenham High School; I knew of Neil but don't think I had ever spoken to him, he had left school after I had joined there after moving up from Essex. However I knew his first serious girlfriend as we used to ride our ponies together, when us children of the village used to ride out our ponies for hours on end everywhere around the Debenham bridleways.

Neil had previously been married and already had a daughter called Ellen now 20 years old, after a year I took the plunge and moved in with Neil to his house at Ufford, later I kept my horse at Pettistree House, and had great fun riding out with the late and dear Henri Kay, (they are now near each other at Pettistree Church graveyard). Whilst out riding I spotted Well Cottage for sale and fell in love with it, in such a quiet picturesque location, Neil loved it too. After only taking 2 weeks to sell the house in Ufford we soon moved into Well Cottage. It is such a lovely village, being just the right size and a lovely community without being too invasive and gossipy. One year after moving to Pettistree in 2004 Neil and I were married in Mauritius, it was lovely and romantic without the stress, and huge expense, involved in a big wedding; just the two of us, a handful of guests whom we met there and a couple of horses!

We had our first daughter Francesca in 2006 and two years later Isabel. Neil was a doting father, such fun and a brilliant sense of humour which in my eyes nobody could beat. Life although hectic, was perfect, two beautiful daughters, lots of animals, Neil as do I loved animals, a lovely place to live and as the children were getting older we were getting more adventurous on going on foreign holidays and had booked to go on an



adventure holiday to Morocco in October, Neil was always adventurous and daring to try new things. However this all came to a sudden and tragic end, on 29th March just two days after his 50th birthday. We were about to go out for a Moss family dinner to celebrate at the Creeting Bell which is also one of the bakery's customers when I had returned home and wondering while Neil was not ready to go out for dinner to be met by two policemen with the devastating news. I just could not believe it and even after 2 months later still find it hard it to believe. I had been out with Francesca and Isabel and my friend Angie to Woodbridge's Bark in the Park, delivered his birthday cake (which I do professionally at the bakery) then on to feed our horses and Neil had been out for a ride on his motorbike where he collided with a car.

Neil's funeral took place on the 23rd April on St George's day at St Mary's Church in Woodbridge, after quite a turnout and a really lovely service by Kevan who Neil got on really well with, we later had a family burial at Pettistree Church taken by John. It is such a lovely part of the churchyard where he is and it is so nice that we can just go near to pay our respects. There have been so many kind people from the village who have been helping us out and I should like thank them all, also the Three Tuns where we recently went for Sunday lunch, apart from fantastic food it is so welcoming and George was fantastic with my girls. Neil would have loved it there too, we had only been there once many years ago, a shame he did not get to go there recently too. It is nice find a pub where I could feel I could go with just my girls, eat well and although very well behaved but not feel that they are a nuisance.

Sarah Moss



Who do I call if there is a power cut? UK Power Networks owns and maintains electricity cables and lines across London, the South East and East of England, making sure your lights stay on.

What causes power cuts? There are several scenarios that commonly cause power cuts. These include:

- Bad weather when severe winds cause damage to overhead power lines or wind-borne debris and trees fall on power lines pulling them down
- Water if it gets underground and into the cables
- Other people working near overhead lines or digging underground which can occasionally result in damage to our electricity cables.

What we do to mitigate this We work hard to prevent power cuts. We have an extensive tree-trimming programme to prevent trees from damaging cables. Our flood defence measures are effective at protecting against water damage. We provide plans of where our electricity cables are and we train other companies' staff to ensure other people do not damage our cables. Overall, each year we spend about £600 million to maintain and replace power lines ensuring that the electricity network remains reliable.



Contact UK Power Networks

☎ **0800 783 8838 (24 hours a day)** or from a mobile **0333 202 2021**

📱 **Text POWER** and your postcode to 80876

🌐 ukpowernetworks.co.uk



Unfortunately, despite our efforts, accidents happen. If you experience a loss of power supply, you can contact us in the following ways:

Vulnerable customers During a power cut we understand that some people may need extra support and we offer priority assistance for our vulnerable customers.

If we know where you are, we can help. We hold a list – called Priority Services Register – of thousands of customers who would feel particularly vulnerable during a power cut and we provide them with extra support if needed.

Who can apply? Customers who are dependent on medical equipment; customers who are chronically sick or have a disability; customers who are blind, visually impaired or deaf; customers with young babies; nursing or residential homes and elderly customers.

We will consider other cases too if you think you would feel particularly vulnerable during a power cut.

What we can do We can't get your power back on more quickly (although we will try our hardest) but we can-

- Call you pro-actively if we expect bad weather in your area that could result in a power cut and offer useful advice on how to prepare
- Offer you a special priority phone number that you can call if you have a power cut
- Provide with a generator where necessary or book you into a hotel
- Keep you updated during a power cut, either by sending you text messages or calling you
- With your agreement, we can ask the British Red Cross to visit your home for extra help and support

How to apply Please help us spread the word about the Priority Service Register so we can reach more people who need us in power cuts. If you or someone you know, meets our criteria above then please apply by either:

Writing to Customer Relations team, UK Power Networks, Fore Hamlet, Ipswich, IP3 8AA ,

Emailing psr@ukpowernetworks.co.uk or Applying online at : www.ukpowernetworks.co.uk/priority



DIARY DATES

Pettistree Heritage Trust Their AGM will be at 6.30pm on Tuesday 10th June in The Greyhound

Church Open Weekend 28th & 29th June

Parish Council meeting 15th July in Village Hall

Mobile Police Station will be parked on the grass verge in Thong Hall Road, Thursday 24th July between 1300-1415.

PROPS orders. Next cut-off dates in 2014
3rd June & 2nd September

Pettistree People copy dates for 2014
11th Aug 10th Nov
Please send your contribution to—
ppedit@uwclub

Treasure Hunt & BBQ 25th August on the Village Green

Regular events

Bellringing 7-9pm on Wednesdays in St Peter & St Paul's church.

Contact Mary Garner on 746097

Carpet Bowls at 7.30pm on Thursdays in the village hall.

Contact Eric Dowker on 01728 746419

Pilates in the village hall. Contact Sam Whitfield on 07716 316294

NOTE: Zumba fitness classes have been suspended

Crossword answers. Across - 1 Tag, 2 Byn, 6 Roof, 8 Pettistree, 11 He, 12 Hall, 14 scene, 15 Queen, 16 Ewers, 19 Dove, 22 Loudham, 23 Gad, 24 Bowls, 25 Petunia, 26 ETA, Down - 1 The, 3 Yare, 4 Greyhound, 5 Ringers, 7 Oval, 8 Pilates, 9 Tuns, 10 Three, 13 Landed, 17 Roust, 18 Zumba, 20 Ogle, 21 Vast, 22 Lip

CONTACTS DIRECTORY

Parish Councillors

Elaine Boardley, Chair,	
1 Hungarian Close	01394 461451
Mary Chilvers, Coopers Cottage	746123
Jeff Hallett, The Laurels	746210
Ruth Leigh, 1 Hall Farm Cottages	746599
Terry Rowles, Low Farm	01394 460422
Mike Watts, Burways	747202
Parish Clerk, Clive Mann	01394 421628

County & District Councillor

Michael Bond michael.bond@suffolkcoastal.gov.uk

District Councillor

Jim Bidwell jim.bidwell@suffolkcoastal.gov.uk

Neighbourhood Watch

Dave Caudwell, Rogues Cottage 747170

Vicar Rev John Eldridge 746026

Church Wardens Maggie Hallett 746210

Brian Nobbs 746590

Bellringers Mary Garner 746097

Village Hall Booking Pauline Jarvie 745030

Age Concern Mike Manning 747321

The Greyhound 746451

The Three Tuns 747979

Wickham Market Health Centre 747101

Wickham Market Post Office 746201

Wickham Market Library 747216

Dial-a-Ride 01473 281194

Village web site www.pettistree.suffolk.gov.uk

Webmaster webmaster@pettistree.suffolk.gov.co.uk

Please note this newsletter depends on you sending us your news and stories and photos

Don't be shy to share them with your fellow residents!

Mike Watts and Maureen Stollery— The Editorial Team