

# Pettistree People

Issue 24

December 2003



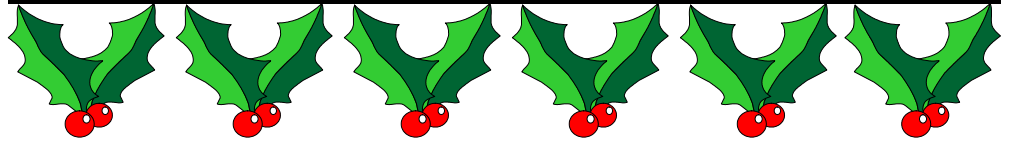
## Parish Councillors

Jeff Hallett Chairman The Laurels Tel No 746210	
Maureen Stollery Vice Chairman 1 Presmere Road 746653	
Nick Beagley 746344 Pettistree Grange	
Tony Franklin Scott's Hall 746585	
Karen Hunter 747430 2 Presmere Road	
Mike Manning Jasmine House 747321	

## *Inside this issue:*

Village Hall	1
Police officer	2
From Brasilia to Birch House	3
Welcome Resource Centre True or False?	4
Random Jottings An Ambiguity	5
Hedgerow Survey Poppy Appeal Cricket Club	6
100 Club Obituary	7
Football Club 1947-1952	8
W M Web-site Forthcoming Events	9
General Information	10

## Village Hall Up-date



Good News!

We have recently heard that the Village Hall Management Committee has been successful with its grant application to Waste Recycling Environment (WREN). The £5,000 grant is towards the proposed extension to the Village Hall and is subject to an 11% donation by a third party (Third Party Funding). We have approached Peter Monk (Suffolk County Councillor) for this donation from his Locality Budget and also Suffolk Coastal District Council (part of the Capital Grant application). Hopefully confirmation within the next couple of months from either source will secure the grant.

The next phase will be to invite tenders from 2/3 local builders with a view to get the extension started spring/summer of 2004.

Other News

### The Quiz Evening (our 7<sup>th</sup>) organised by the Village Hall Committee October 18<sup>th</sup> 2003

With Quiz Master - David Caudwell we had a very successful evening and the winning team, Karen Hunter, Hazel, Les & Tony had a grand score of 136 out of 165.

### An Evening of Suffolk Squit November 21<sup>st</sup> 2003

Peter Holloway entertained us in his own inimitable style, and gave us a truly memorable evening. He introduced us to a wonderful selection of jokes and anecdotes taking us from the beach at Felixstowe to his home at Charsfield. The variety of his sketches was truly impressionable, with the presentation of the ferret leaving the local Vet in stitches, and his magic tricks leaving his audience baffled and bewildered. With keyboard accompanist Alan Smith he entertained us on the saxophone and trumpet, and took us down memory lane with his impression of Elvis and The Beatles.

Peter is a local Farmer, and member of The Magic Society, who has raised many thousands of pounds for various charities through his entertaining. The proceeds from this event will go to the Village Hall extension fund.

Rita Smith provided us with a Supper of Chile Con Carne, using mince from

the Pettistree Red Poll Herd, which was received enthusiastically; and it was a privilege to enjoy an evening of such wonderful 'home-made' entertainment.

Unfortunately several people were disappointed in not being able to get tickets as they sold out so quickly.

Thank you so much to everyone who contributed towards such an enjoyable evening.

In the New Year the Committee will prepare a programme of more fund raising events so keep an eye open for the posters.

The Village Hall Committee would like to wish you all a Very Happy Christmas and New Year and remind the 100 Club members that a bumper draw takes place in December.

Thank you for your continued support.

*Sheila Manning*  
(Secretary - Pettistree Village Hall Management Committee)

## **A message from your Community Police Officer**

I would like to take this opportunity to introduce myself as the community police officer for Pettistree and to explain what has been happening with regard to policing in your village recently. You will probably be aware that after PC Robbie Abraham moved on, PC Paul Flatt was appointed to take his place. Unfortunately PC Flatt is currently unable to perform his duties for health reasons and I have been asked to take over until further notice. It is unclear whether Paul will be able to return, so I'm afraid I can't say if my appointment will be permanent or not. I'm sorry that I can't be more definite, but please be assured I will do whatever I can to assist you for as long as I am responsible for the village.

For your information I have been a police officer for 25 years and have been stationed at Woodbridge for 6 years. I have been a community police officer for just over a year and the area that I was already covering adjoins Pettistree.

I am able to report that there has been no recorded crime in Pettistree for over two months. The last crime of any significance involved entry to an outbuilding where items stored there were stolen. Unfortunately crimes of this nature are not uncommon in the Woodbridge police sector and I would ask residents to keep sheds, barns and outbuildings etc properly secured, and to think carefully about where valuable items such as power tools are stored. Simple alarms are available for sale at Woodbridge police station for £8, which are very good at protecting against this type of crime. In August fuel was stolen from a vehicle parked overnight in the village, which was one of a spate of such offences over a large area. Arrests have been made in relation to these crimes, which appear at the moment to have stopped.

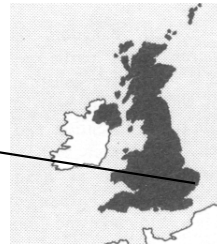
If anyone wishes to contact me my office phone number (for non urgent matters only) is 01473 383487. Our main switchboard number is 01473 613500 and of course if you require urgent assistance dial 999. Please do not hesitate to contact me.

*PC 256 Mark Thompson.*

# From Brasilia to Birch House



Not To Scale!



## Our first year in Pettistree

First of all a short introduction. The Jarvie family Jim, Pauline, Alex (16), Alistair (14) and Jimmy (11) arrived in Pettistree in August last year having spent four years living in Brazil. Jim was seconded to the British Embassy in Brasilia. The city has been described as a bit like Milton Keynes with sun and without the concrete cows. Brasilia was built in the sixties a designer capital, constructed at the geographical centre of the country. Brasilia replaced the two historical capitals, Rio in the south and Salvador in the north.

Living in Brazil was different. For a start all the houses had security fences and guards. This was an attempt to prevent kidnappings, a favoured activity for the criminal gangs. The boys attended an American school and in their first three weeks they witnessed the kidnapping of an eleven year old girl who was abducted after her driver was shot. This all happened at the school gates. The kids were instructed to "hit the dirt" by the headmaster. I tried to stop the boys telling their family back home but to no avail. The girl, the daughter of a Brazilian politician ( and a bit of a crook ) was rescued after a week. It transpired that the kidnapping was planned and orchestrated by military police officers !

Brazil is a vast and diverse country which is influenced by a variety of nationalities. The Portuguese discovered Brazil 500 years ago and gave the country their language. Being so vast, Brazil is the same size as the whole of Europe, it left opportunities for others to occupy.

The north east has a strong African influence, primarily from the slaves brought in from Angola. If you have ever wondered what the two men are doing on the roof top in a BBC link between programmes ( white trousers and red tops) this is Caporeira. The slaves were not allowed to indulge in martial arts but could practise a non contact dance. Alex attended Caporeira classes in Norwich so it has arrived in the UK.

The south has a strong Germanic influence with many towns being built with houses similar to those in Bavaria. They even have their own October fest. Unlike the Germans, who arrived in Brazil at the end of the second world war, the Japanese have been there since the turn of the century. They had arrived to start and develop horticulture in Brazil.

Last but not least, the indigenous Indians. Much has been written about these beautiful people. They have their own government department and it was not uncommon to be at Brasilia airport and come across 20 or 30 Amazonian Indians complete in tribal dress with only a boarding pass as the only link to the modern world. The embassy had a visit from the chief of the Xingue tribe and he asked us where we were from. He had no concept of life outside his village ( and the occasional visit to Brasilia) let alone in another country.

We miss Brazil, particularly the outdoor family life. Every weekend the Brazilians and all of their family gather to barbecue and generally party. It is not quite the same in Pettistree although we did

barbie the turkey at Xmas ( have you ever tried to get charcoal from a garage in December)?

Our life is fairly busy driving the boys around. They all play football for Framlingham Town and Jimmy plays rugby for Woodbridge. Alex is able to practise his Portuguese with Fernando the chef from the Three Tuns. Both Alex and Alistair passed their Portuguese GCSE's. Alex achieved an "A", the only person in the UK to get that grade.

As much as we miss living abroad we are here to stay. We fell in love with Pettistree from the start and really enjoy the village life. It is a bit surreal listening to the church bells whilst barbequing chicken hearts!

*Jim Jarvie*

## Welcome

We extend a warm welcome to the following people who have recently moved into the village and hope to meet them at village events

Neil Moss and Sarah	Well Cottage	
Patrick Kathy and Ellen Wilton	Home Farm	
Michael and Marlene Watts	Cornerways	renamed Burways

For anyone asked for directions please note that we have the names Walton, Welton, and Wilton in the village while Watts is also the name at the Kennels.

## True or False?

When playing Bowls I was told by a Bowler that Suffolk is the only County that calls the Jack a 'Cott'. This is because when playing an odd number of 'ends', i.e. 21, the game finishes opposite to where it began so an extra end is played. A ten pence piece is placed on the top of the 'Cott' by a Skip and all bowlers aim for it. The winner being the one closest, collects ten pence from each player. The origin of this was that the money collected was donated to the local Cottage Hospital hence the name "Cott".

*Kath Hilton*

## Wickham Market Resource Centre

The Wickham Market Partnership is forging ahead with plans for a Resource Centre. It will be housed in two redundant bungalows near the Medical Centre, linked by a new reception area. The complex will incorporate an improved library offering more internet access and space for recreational reading. In the other half will be updated facilities for Doctors On Call together with day-time health care facilities, a confidential interview room and a larger meeting space for a variety of users, including training, education, self help groups, business support etc. The Centre will open in the summer of 2004, with building work commencing in January.

*Cath Caudwell*

## Random Jottings

When we retired, we had, for the very first time in many years—spare time—lots of it—all ours! It was summer time—so the garden had first call---plus a few days out---hither and yon. Gardens, as you know---can absorb all the time available--- unless you are firm. Then came autumn---followed by the colder darker days of winter--- so a warmer indoor alternative seemed a good idea. We decided to try to find out some of the history of our house, although centuries old--- our deeds are unromantically type-written and do not go very far back. It was a little disappointing to find that houses and buildings did not seem so important as lands and fields. Later thanks to Joan Peck's very detailed research into our village history and properties--- we learned a great deal more about the house.

Now that we knew about the Ipswich Record Office our attention turned to our family history and this led to visits to Shrewsbury and Warwick record office. As these are both lovely and interesting towns anyway ---genealogy was turning out to be fun as well as absorbing.

Then one of our daughters became enthralled with the Jefferson family ---yes the same one that produced an early American President. His family had very many close connections indeed with East Anglia---including our own locality. Through the Ipswich Record office we were able to help her quite a lot---hunting for the nuggets of information from a fascinating wealth of information from wills, letters, dates, locations etc, etc. What a wonderful adventurous family saga film this would have made.

At times---if I had a little spare time at the end of the afternoon---I looked through some of the really old newspapers. It seems that the modern press has not got a monopoly of sensational reporting.

I jotted a few “oldies” down. Apologies for forgetting to record the dates of the relevant cuttings and of course there were no pictures!

Deserted from Colonel Long's Company in the 5<sup>th</sup> Regiment of Foot Guards on the 13<sup>th</sup> July at Burnt Wood in Essex, Thomas North a miller by trade. Thirty years of age Short black hair, of a swarthy complexion, round shouldered, a strong well fit man. 5ft 8 ins. without his shoes. He lived formerly a servant with Mr Parfono at Witham Mill near Witham in Essex. 2 Guineas reward +20 shillings from Royal Bounty (Deserter).

We hear that a party of smugglers meeting with Mr Eliot the Riding officer of the Town had fallen on them and had cut him almost to pieces and that a soldier passing accidentally by, they attacked him likewise, who in defence drew and ran through one of them through the body-which highly exasperated them- that they discharged a blunderbus and lodged five balls in him, but t'is hoped that none of his Wounds are Mortal. They then took Mr Eliot home and carried off their wounded Companion but have since returned the beast.

*Betty Whitfield*

## An Ambiguity

### Were there “Goings On” in 1658?

Edmund Groome was a wealthy landowner who lived at Green Farm. In his Will he left several bequests, one of which was -----“ I do give unto the said Alice my wife All other my messuages tenements and lands both free and copyhold in Petistrey Ufford and any other town in the County aforesaid during her naturall life Gravell Pitt Ufford only excepted which said Gravell Pitt will I give to the Towne of Petistrey towards the mending of their wayes forever”.

*J.M.P. Local Historian*

## **Hedgerow Survey**

The 'Hedgerow Team' met on the 16th September to compare notes. We all agreed that the forms provided for recording made the job a little difficult and each of us improvised our own ways of relating the forms to the map

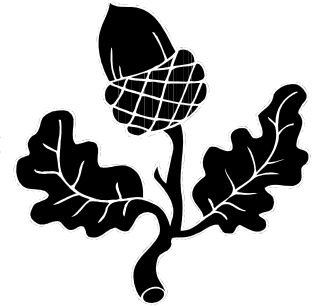
Full marks had to go to Lin Carter and Karl Randall for a very comprehensive way of reporting their findings.

We all agreed that we have enjoyed the walks and the idea of taking a plastic bag to pick some fruit along the way worked well except for having to carry them home!

Phase one some seventy odd hedges is complete and work will be carried out during the winter to set up phase two namely land east of the A1214 Loudham.

My thanks go to a very enthusiastic and supportive team for the work they have carried out and I hope they are looking forward to next spring and some more rambles in our Parish.

*Ann Sayer*



## **The Royal British Legion Poppy Appeal**

The house to house collection in Pettistree exceeded last years record and a total of £175.57 was achieved, thanks to the generosity of everyone in Pettistree and Loudham.

The Local Honorary Poppy Appeal Organiser for our area Mr Cotterell is retiring after a lengthy period of service and Mr J Quinlan from Dallinghoo is taking over.

*Ann Sayer, Mike Sayer, Maureen Stollery, Kath Hilton*

## **Cricket Club**

After the previous year's relegation, Pettistree once again found themselves in the bottom division, quite a fall after the previous two years of promotion. A heavy winter of recruiting brought a few new faces to bolster numbers and make for a healthy, competitive squad.

As the P.A.K.K.A. (our Home Ground behind the Village Hall) is not available early season, all games are played away. A mixed bag of results was found on our travels, so we were glad to get back home to play on our own ground for home advantage.

The final run-in with 4 straight victories was very pleasing, nearly made the promotion place, but not quite. So the boys are fired up and raring to go to make amends for this. We'll be giving it 100% effort to honour the Village, although your support is also vital.

Finally, we are desperately trying to source a set of GANG MOWERS as a means of cutting the pitch. If anyone has information or contacts we would be grateful for help on this matter.

*Barney Smith, Captain Pettistree Cricket Club. Tel: 07884328148*

## 100 Club

	1st	2nd	3rd
<b>August</b>	Adam Signy	Candy & Peter Wells	Mr Green
<b>September</b>	Graham Forder	John Ballance	Joan Jordan
<b>October</b>	John Argenti	Mollie Incoll	John & Brenda Pallet
<b>November</b>	Brian Stollery	Des Bayliss	Don & Cherry White
<b>December</b>	Liisa Beagley	Roger Chilvers	Philip Kay

Thanks to every member for their continuing support. If you haven't been lucky —don't worry— your time will come! The odds are better than nationally.

## Obituary

### MARY KEMP née CLACK

Mary was born in Loudham in 1936, the youngest of a family of nine children and apart from a short period in Framlingham and the last two years in Felixstowe, lived there all her life. Her father came as horseman to Capt Wigan of Loudham Hall in 1919, just after the first world war so the name of Clack has been synonymous with Pettistree with Loudham for over eighty years.

Mary has left on record several of her memories which she wrote for the two Heritage exhibitions in 1995 and 2000. These are word pictures of the changing pattern of rural life. She gave her memories such titles as "Washday was always Monday whatever the weather" "Life in a large Family in Loudham" and "The upstairs Maid" Amongst other people in the village she was interviewed for Radio Suffolk by Canon John Eley in 1995.

Latterly Mary will be remembered for her chocolate cake and her ability in wielding a teapot both publicly and privately.

Our sympathy goes to all her family.

## PETTISTREE FOOTBALL CLUB 1947-1952

Pettistree Football Club was the brain-child of Peter Clements and his great friend "Tich" (Arthur) Hall. Peter was the son of Alfred and Agnes Clements Landlords at the "Greyhound". Peter and Tich persuaded other local people to come forward with ideas and the club was born in the 1947-48 season. At first they competed in the Leiston and District League Division Two but as they improved they progressed into Division One. As more players wanted to join and play for the club it became necessary to form a reserve team and they played in the Second Division.

Some of the early members were Leslie Pettit, Derek Ramsey, Joe and Mick Arbon, Fred and Dick Garnham, Lennie (Wam) Smith, Stan Smith and Richard Rackham who joined in 1948/49 although still in the Air Force and had to wangle weekend passes from Cardington in order to get home to play in a match.

Team selection meetings were always held on Monday nights at "The Greyhound" and Richard for one would cycle up there and eagerly await the sheet announcing the team for the coming Saturday to see if he had been selected. After National Service competition for places was quite intense. The Selection Committee members were Bill Naphine, Emie Black, A.R. Hamer, Frank Button, Stan Smith and the Captain of the team.

The ground was a meadow next to the "Three Tuns" A hedge crossed the field on the north side of the footpath and whilst "The Greyhound" was the headquarters and hub of the team the Landlord of the "Tuns" (Tibbenham) was very supportive. The meadow belonged to Horrie Last of Church Farm and before a match could be played the cow-pats had to be removed. Games were played here for five or six years but later the team moved to a meadow opposite Home Farm. This was felt to be not so convenient as it was further to the H.Q.

There were hilarious nights in "The Greyhound" after a home win and particularly if it had been a local Derby which was often of great concern to the Rev. Quick, Vicar of both Pettistree and Wickham Marke. The rivalry was intense.

People watched the game from along the main road then the A12. Jimmy Saunders, (who married Peter's sister Audrey) an Eastern Counties bus driver would put the five o'clock bus into first gear so that it would grind slowly along into Wickham Market and he could see how the game was going.

The Secretary and driving force of the Club was W.G. (Bill) Naphine, chauffeur, gardener and handyman to Capt. Hugh Maxwell at "The Grange".

There was an Annual Dinner/Social Evening held in Pettistree Hut and also an Annual Outing. One outing arranged by Capt. Wigan and his friend Sir Dennis Hill-Wood was to Highbury to watch Arsenal. The coach load was made up of the team, their supporters, wives and girlfriends. Another similar outing was to Stamford Bridge to see Chelsea play.

In 1951 (Festival of Britain Year), Pettistree played in the Granville Cup Final and beat Wickham Market 3-2. This was the Leiston and District League and the cup was presented to the team by Mrs Edgar Granville wife of the Liberal M.P for Eye Constituency.

In 1951-52 the dressing rooms moved from "The Greyhound" to the "Tuns" for one season.

In March 1951 St Margaret's Reserves Leiston were beaten 15-0 by the 1st XI!

*As told to History Recorder by Richard Rackham*



## Wickham Market Web-site

Look out for the new Partnership website for Wickham Market, being launched at the end of November. Log on to [www.wickham-market.org.uk](http://www.wickham-market.org.uk). By becoming a member of the Partnership you can advertise on the site.

Contact the Company Secretary at Rogues Cottage, Walnuts Lane or telephone 01728 747170, or email [wm.partnership@pettistree1.freeserve.co.uk](mailto:wm.partnership@pettistree1.freeserve.co.uk). This is a community website aimed at promoting Wickham Market and the surrounding area to visitors and local people alike.

*Cath Caudwell,*

## Forthcoming Events



### WORKING TOWARDS 2005

**Pettistree Heritage 2000 Trust will be staging its third exhibition of historical records in 2005.**

**We are hoping to include a section comparing occupations of 100 years ago and those of today.**

**We should be grateful for your co-operation in early 2005 in compiling a 'census' of your current employment, including voluntary commitments, to present a snapshot of 'Pettistree at Work'.**

**In the meantime we should be grateful for any photographs of the parish (Pettistree and Loudham), or local information**

**Contact: Joan Peck, The Den, Rogues Lane (Email: [de.rola@virgin.net](mailto:de.rola@virgin.net))  
Cath Caudwell, Rogues Cottage, Walnuts Lane  
(Email: [caudwell@pettistree1.freeserve.co.uk](mailto:caudwell@pettistree1.freeserve.co.uk))**

## Corny Corner

Two boll weevils grew up in Mississippi. One went to Hollywood and became famous. The other stayed behind in the cotton fields and never amounted to much. The second, naturally, became known as the lesser of two weevils!

## Useful Numbers

### County & District Councillors

Mr Peter Monk, County Councillor 01394 411373  
Mr Paul Callaghan, District Councillor 01394 389052  
Mr John Perry 01394389523

### Neighbourhood Watch

Dave Caudwell 747170 Rogues Cottage  
Mike Sayer 01394 460 639 4 Hungarian Close

For Crimeline Information, 01473 613611. Current crime update available after 5pm on Tuesdays. Call this number to find out what is happening in your area. The Parish Police Officer can be contacted at Woodbridge Police Station on 01473 613500

### Useful People to Contact

Bellringers	Mary Gamer 746097
ChurchWardens	MikePerkins 01394 460284
	Jeff Hallett 746210
Village Hall Booking Sec	Jacki Franklin 746585
Local History Recorder	Joan Peck
The Greyhound Inn	Deborah Hughes 746451
The Three Tuns	John & Brenda Pallatt 746244
Wickham Market	Health Centre 747101
	Post Office 746201



## Computer Club

Want to have fun learning to use computers in a friendly relaxed atmosphere???

Then come along and join our group, you'll be very welcome.

You can choose a Tuesday morning or afternoon session at

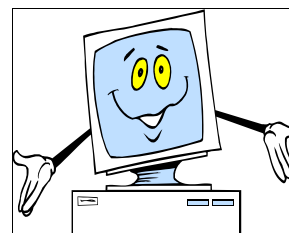
Pettistree Village Hall

Are you interested ???

Then contact Claire, Tel:01728 604011

at The Willows,

Station Approach, Saxmundham IP17 1BW



And the course is all free

## Stop Press

We are sorry not to be able to print a report of the Parish Council meeting held on November 11th. We hope to include it in the next issue.

. Thank you for your contributions to this edition of our newsletter. We hope to produce the next one in early March 2004. **The deadline will be February 14th 2004**. Articles on your hobbies, interests, holidays achievements, in fact almost anything will be most welcome We should also appreciate some feedback on this and previous issues.

### Christmas Greetings

and a

Happy New Year



Editors